



Recombinant Human PVALB (C-6His)

Catalog #	EPT149
Expression Host	E.coli
DESCRIPTION	Recombinant Human Parvalbumin Alpha is produced by our E.coli expression system and the target gene encoding Ser2-Ser110 is expressed with a 6His tag at the C-terminus.
Accession	P20472
Synonyms	Parvalbumin Alpha; PVALB
Mol Mass	13.12 KDa
AP Mol Mass	14 KDa, reducing conditions
Purity	Greater than 95% as determined by reducing SDS-PAGE.
Endotoxin	Less than 0.1 ng/μg (1 EU/μg) as determined by LAL test.
FORMULATION	Lyophilized from a 0.2 μm filtered solution of 20mM PB, 150mM NaCl, pH 7.4.
RECONSTITUTION	Always centrifuge tubes before opening. Do not mix by vortex or pipetting.





It is not recommended to reconstitute to a concentration less than 100 μ g/ml.

Dissolve the lyophilized protein in distilled water.

Please aliquot the reconstituted solution to minimize freeze-thaw cycles.

SHIPPING

The product is shipped at ambient temperature.

Upon receipt, store it immediately at the temperature listed below.

STORAGE

Lyophilized protein should be stored at $< -20^{\circ}\text{C}$, though stable at room temperature for 3 weeks.

Reconstituted protein solution can be stored at $4-7^{\circ}\text{C}$ for 2-7 days.

Aliquots of reconstituted samples are stable at $< -20^{\circ}\text{C}$ for 3 months.

BACKGROUND

Parvalbumin α (PVALB) is a member of the parvalbumin family. PVALB is a high affinity calcium ion-binding protein, with two EF hand domains. PVALB is structurally and functionally similar to calmodulin and troponin C, it can bind two calcium ions. Parvalbumin is thought to be involved in relaxation after contraction in muscle. Parvalbumin is expressed in a specific population of GABAergic interneurons,

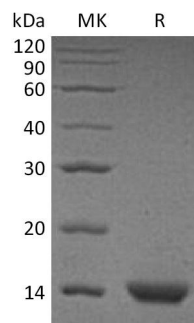




ELK Biotechnology

which are believed to have a role in maintaining the balance between excitation and inhibition in the cortex as well as the hippocampus.

SDS-PAGE



+86-27-59760950

ELKbio@ELKbiotech.com

www.elkbiotech.com

23-2, No.388 Gaoxin 2nd Road, Wuhan East Lake Hi-tech Development Zone, Hubei, P.R.C