



ELK Biotechnology
For research use only.

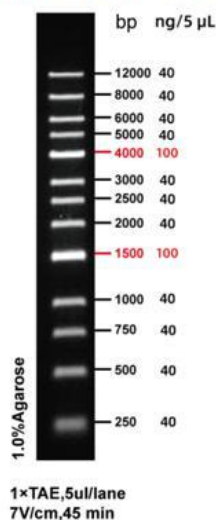
1kb plus DNA Ladder

Catalog No.	Specification	Storage/Shelflife
EDL108-01	250 μ l	-20C°/2 years
EDL108-02	500 μ l	-20C°/2 years

Introduction

1 kb plus Ladder DNA Marker is composed of 13 DNA fragments with a length of 250 bp to 12,000 bp. dissolved in 1 \times Loading Buffer, and can be used for direct electrophoresis of 5-10 μ l during used, which is very convenient to use. The indicator band was 4000 bp and 1500 bp, the indicator band concentration was 100 ng/5 μ L, and the other bands were 40 ng/5 μ L.

GoldBand 1kb DNA ladder



Note

1. When the width of the sample well during electrophoresis is less than 5 mm, a clear band can be obtained by taking 5 μ l Marker electrophoresis each time. If the sample hole is widened, the sampler volume of Marker must be increased appropriately.
2. For DNA electrophoresis, the purity of Agarose greatly affects the clarity of DNA bands. Therefore, the best quality Agarose should be used for electrophoresis. The recommended gel concentration is 1% to 2%.
3. When performing Agarose electrophoresis, the concentration of Agarose is closely related to the separation performance of DNA fragments. The greater the concentration of Agarose, the better the separation performance of short DNA; conversely, the smaller the concentration of Agarose, the more favorable for the separation of long DNA.