



CEA20 rabbit pAb

Cat No.:ES9506

For research use only

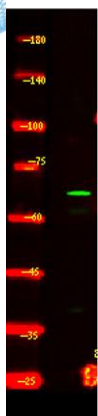
Overview

Product Name	CEA20 rabbit pAb
Host species	Rabbit
Applications	WB;ELISA
Species Cross-Reactivity	Human;Rat;Mouse;
Recommended dilutions	WB 1:500-2000 ELISA 1:5000-20000
Immunogen	Synthesized peptide derived from part region of human protein
Specificity	CEA20 Polyclonal Antibody detects endogenous levels of protein.
Formulation	Liquid in PBS containing 50% glycerol, 0.5% BSA and 0.02% sodium azide.
Storage	Store at -20°C. Avoid repeated freeze-thaw cycles.
Protein Name	Carcinoembryonic antigen-related cell adhesion molecule 20
Gene Name	CEACAM20 UNQ9366/PRO34155
Cellular localization	Cell projection, microvillus membrane ; Single-pass type I membrane protein . Apical cell membrane ; Single-pass type I membrane protein . Colocalizes with PTPRH and CEACAM1 at the apical brush border of intestinal cells.
Purification	The antibody was affinity-purified from rabbit antiserum by affinity-chromatography using epitope-specific immunogen.
Clonality	Polyclonal
Concentration	1 mg/ml
Observed band	64kD
Human Gene ID	125931
Human Swiss-Prot Number	Q6UY09
Alternative Names	
Background	similarity:Belongs to the immunoglobulin superfamily. CEA family.,similarity:Contains 4 Ig-like C2-type (immunoglobulin-like) domains.,





ELK Biotechnology



Western Blot analysis of HEK293 lysis, using primary antibody at 1:1000 dilution. Secondary antibody(catalog#:RS23920) was diluted at 1:10000



+86-27-59760950

ELKbio@ELKbiotech.com

www.elkbiotech.com

23-2, No.388 Gaoxin 2nd Road,Wuhan East Lake Hi-tech Development Zone, Hubei , P.R.C