



FAP-1 rabbit pAb

Cat No.:ES8916

For research use only

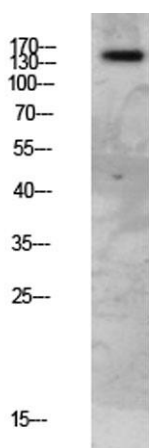
Overview

Product Name	FAP-1 rabbit pAb
Host species	Rabbit
Applications	WB;ELISA
Species Cross-Reactivity	Human;Mouse;Rat
Recommended dilutions	WB 1:500-2000, ELISA 1:10000-20000
Immunogen	Synthesized peptide derived from human FAP-1 Polyclonal
Specificity	This antibody detects endogenous levels of FAP-1.
Formulation	Liquid in PBS containing 50% glycerol, 0.5% BSA and 0.02% sodium azide.
Storage	Store at -20°C. Avoid repeated freeze-thaw cycles.
Protein Name	Seprase (EC 3.4.21.-) (170 kDa melanoma membrane-bound gelatinase) (Fibroblast activation protein alpha) (Integral membrane serine protease)
Gene Name	FAP
Cellular localization	[Prolyl endopeptidase FAP]: Cell surface . Cell membrane ; Single-pass type II membrane protein . Cell projection, lamellipodium membrane ; Single-pass type II membrane protein . Cell projection, invadopodium membrane ; Single-pass type II membrane protei
Purification	The antibody was affinity-purified from rabbit antiserum by affinity-chromatography using epitope-specific immunogen.
Clonality	Polyclonal
Concentration	1 mg/ml
Observed band	150kD
Human Gene ID	2191
Human Swiss-Prot Number	Q12884
Alternative Names	Seprase (EC 3.4.21.-) (170 kDa melanoma membrane-bound gelatinase) (Fibroblast activation protein alpha) (Integral membrane serine protease)
Background	The protein encoded by this gene is a homodimeric





integral membrane gelatinase belonging to the serine protease family. It is selectively expressed in reactive stromal fibroblasts of epithelial cancers, granulation tissue of healing wounds, and malignant cells of bone and soft tissue sarcomas. This protein is thought to be involved in the control of fibroblast growth or epithelial-mesenchymal interactions during development, tissue repair, and epithelial carcinogenesis. Alternatively spliced transcript variants encoding different isoforms have been found for this gene. [provided by RefSeq, Apr 2014],



Western blot analysis of mouse-lung lysate, antibody was diluted at 1000. Secondary antibody(catalog#:RS0002) was diluted at 1:20000

