

COL8A2 rabbit pAb

Cat No.:ES8857

For research use only

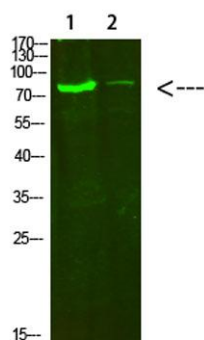
Overview

Product Name	COL8A2 rabbit pAb
Host species	Rabbit
Applications	WB;ELISA
Species Cross-Reactivity	Human;Mouse;Rat
Recommended dilutions	WB 1:500-2000, ELISA 1:10000-20000
Immunogen	Synthesized peptide derived from human COL8A2. at AA range: 611-660
Specificity	COL8A2 Polyclonal Antibody detects endogenous levels of COL8A2
Formulation	Liquid in PBS containing 50% glycerol, 0.5% BSA and 0.02% sodium azide.
Storage	Store at -20°C. Avoid repeated freeze-thaw cycles.
Protein Name	COL8A2
Gene Name	COL8A2
Cellular localization	Secreted, extracellular space, extracellular matrix, basement membrane.
Purification	The antibody was affinity-purified from rabbit antiserum by affinity-chromatography using epitope-specific immunogen.
Clonality	Polyclonal
Concentration	1 mg/ml
Observed band	80kD
Human Gene ID	1296
Human Swiss-Prot Number	P25067
Alternative Names	Collagen alpha-2(VIII) chain (Endothelial collagen)
Background	This gene encodes the alpha 2 chain of type VIII collagen. This protein is a major component of the basement membrane of the corneal endothelium and forms homo- or heterotrimers with alpha 1 (VIII) type collagens. Defects in this gene are associated with Fuchs endothelial corneal dystrophy and posterior polymorphous corneal dystrophy type 2. Alternative splicing results in multiple transcript





variants. [provided by RefSeq, Jun 2014],



Western Blot analysis of 1,hela 2,3T3 cells using primary antibody diluted at 1:500(4°C overnight). Secondary antibody:Goat Anti-rabbit IgG IRDye 800(diluted at 1:5000, 25°C, 1 hour)

