

MIA rabbit pAb

Cat No.:ES8773

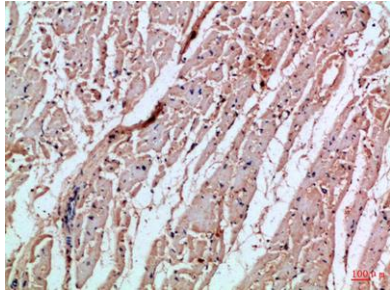
For research use only

Overview

Product Name	MIA rabbit pAb
Host species	Rabbit
Applications	IHC;IF;ELISA
Species Cross-Reactivity	Human;Rat;Mouse;
Recommended dilutions	IHC-p 1:50-200, ELISA 1:10000-20000
Immunogen	Synthetic peptide from human protein at AA range: 90-131
Specificity	The antibody detects endogenous MIA
Formulation	Liquid in PBS containing 50% glycerol, 0.5% BSA and 0.02% sodium azide.
Storage	Store at -20°C. Avoid repeated freeze-thaw cycles.
Protein Name	Melanoma-derived growth regulatory protein (Melanoma inhibitory activity protein)
Gene Name	MIA
Cellular localization	Secreted.
Purification	The antibody was affinity-purified from rabbit antiserum by affinity-chromatography using epitope-specific immunogen.
Clonality	Polyclonal
Concentration	1 mg/ml
Observed band	
Human Gene ID	8190
Human Swiss-Prot Number	Q16674
Alternative Names	Melanoma-derived growth regulatory protein (Melanoma inhibitory activity protein)
Background	function:Elicits growth inhibition on melanoma cells in vitro as well as some other neuroectodermal tumors, including gliomas.,PTM:May possess two intramolecular disulfide bonds.,similarity:Belongs to the MIA/OTOR family.,similarity:Contains 1 SH3 domain.,tissue specificity:All malignant melanoma cell lines tested and infrequently in glioma cell lines.,



Immunohistochemical analysis of paraffin-embedded
Human-heart, antibody was diluted at 1:100



Immunohistochemical analysis of paraffin-embedded
Human-heart, antibody was diluted at 1:100

