



IgD rabbit pAb

Cat No.:ES8737

For research use only

Overview

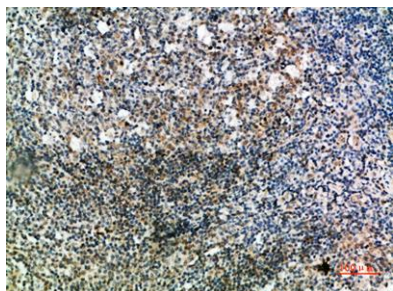
Product Name	IgD rabbit pAb
Host species	Rabbit
Applications	IHC;IF;ELISA
Species Cross-Reactivity	Human;Rat;Mouse;
Recommended dilutions	IHC-p 1:50-200, ELISA 1:10000-20000
Immunogen	Synthetic peptide from human protein at AA range: 111-160
Specificity	The antibody detects endogenous IgD
Formulation	Liquid in PBS containing 50% glycerol, 0.5% BSA and 0.02% sodium azide.
Storage	Store at -20°C. Avoid repeated freeze-thaw cycles.
Protein Name	Ig delta chain C region
Gene Name	IGHD
Cellular localization	[Isoform 1]: Secreted .; [Isoform 2]: Cell membrane; Single-pass type I membrane protein .
Purification	The antibody was affinity-purified from rabbit antiserum by affinity-chromatography using epitope-specific immunogen.
Clonality	Polyclonal
Concentration	1 mg/ml
Observed band	
Human Gene ID	
Human Swiss-Prot Number	P01880
Alternative Names	Ig delta chain C region
Background	similarity:Contains 3 Ig-like (immunoglobulin-like) domains.,





ELK Biotechnology

Immunohistochemical analysis of paraffin-embedded human-tonsil, antibody was diluted at 1:200



+86-27-59760950

ELKbio@ELKbiotech.com

www.elkbiotech.com

23-2, No.388 Gaoxin 2nd Road,Wuhan East Lake Hi-tech Development Zone, Hubei , P.R.C