



DCT rabbit pAb

Cat No.:ES8595

For research use only

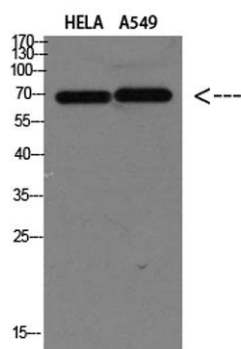
Overview

Product Name	DCT rabbit pAb
Host species	Rabbit
Applications	WB;IHC;IF;ELISA
Species Cross-Reactivity	Human;Rat;Mouse
Recommended dilutions	WB 1:500-2000,IHC-p 1:500-200, ELISA 1:10000-20000
Immunogen	Synthetic peptide from human protein at AA range: 232-304
Specificity	The antibody detects endogenous DCT
Formulation	Liquid in PBS containing 50% glycerol, 0.5% BSA and 0.02% sodium azide.
Storage	Store at -20°C. Avoid repeated freeze-thaw cycles.
Protein Name	DCT
Gene Name	DCT TYRP2
Cellular localization	Melanosome membrane ; Single-pass type I membrane protein . Melanosome . Proper trafficking to melanosome is regulated by SGSM2, ANKRD27, RAB9A, RAB32 and RAB38. .
Purification	The antibody was affinity-purified from rabbit antiserum by affinity-chromatography using epitope-specific immunogen.
Clonality	Polyclonal
Concentration	1 mg/ml
Observed band	59kD
Human Gene ID	1638
Human Swiss-Prot Number	P40126
Alternative Names	L-dopachrome tautomerase (DCT;DT;EC 5.3.3.12;L-dopachrome Delta-isomerase;Tyrosinase-related protein 2;TRP-2;TRP2)
Background	catalytic activity:L-dopachrome = 5,6-dihydroxyindole-2-carboxylate.,cofactor:Binds 2 zinc ions per subunit.,function:Involved in regulating





eumelanin and pheomelanin levels.,pathway:Pigment biosynthesis; melanin biosynthesis.,similarity:Belongs to the tyrosinase family.,subunit:Tyrosinase, TYRP1 and TYRP2 may form a multienzyme complex.,



Western blot analysis of HELA A549 Cell Lysate, antibody was diluted at 1:1000. Secondary antibody(catalog#:RS0002) was diluted at 1:20000

Immunohistochemical analysis of paraffin-embedded human-breast-cancer, antibody was diluted at 1:200

