



Jamip2 rabbit pAb

Cat No.:ES8104

For research use only

Overview

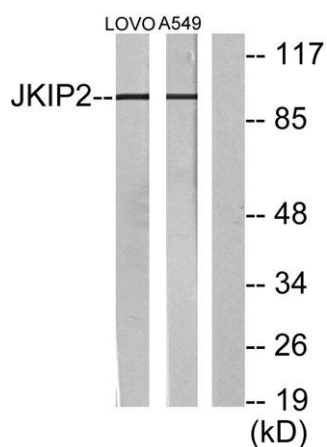
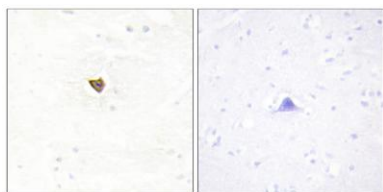
Product Name	Jamip2 rabbit pAb
Host species	Rabbit
Applications	WB;IHC;IF;ELISA
Species Cross-Reactivity	Human;Rat;Mouse;
Recommended dilutions	Western Blot: 1/500 - 1/2000. Immunohistochemistry: 1/100 - 1/300. Immunofluorescence: 1/200 - 1/1000. ELISA: 1/10000. Not yet tested in other applications.
Immunogen	The antiserum was produced against synthesized peptide derived from human JAKMIP2. AA range:761-810
Specificity	Jamip2 Polyclonal Antibody detects endogenous levels of Jamip2 protein.
Formulation	Liquid in PBS containing 50% glycerol, 0.5% BSA and 0.02% sodium azide.
Storage	Store at -20°C. Avoid repeated freeze-thaw cycles.
Protein Name	Janus kinase and microtubule-interacting protein 2
Gene Name	JAKMIP2
Cellular localization	Golgi apparatus .
Purification	The antibody was affinity-purified from rabbit antiserum by affinity-chromatography using epitope-specific immunogen.
Clonality	Polyclonal
Concentration	1 mg/ml
Observed band	95kD
Human Gene ID	9832
Human Swiss-Prot Number	Q96AA8
Alternative Names	JAKMIP2; JAMIP2; KIAA0555; NECC1; Janus kinase and microtubule-interacting protein 2; CTCL tumor antigen HD-CL-04; Neuroendocrine long coiled-coil protein 1
Background	The protein encoded by this gene is reported to be a component of the Golgi matrix. It may act as a





golgin protein by negatively regulating transit of secretory cargo and by acting as a structural scaffold of the Golgi. Alternative splicing results in multiple transcript variants. [provided by RefSeq, Aug 2012],

Immunohistochemistry analysis of paraffin-embedded human brain tissue, using JAKMIP2 Antibody. The picture on the right is blocked with the synthesized peptide.



Western blot analysis of lysates from LOVO and A549 cells, using JAKMIP2 Antibody. The lane on the right is blocked with the synthesized peptide.

