

Histone H2A (phospho Thr121) rabbit pAb

Cat No.:ES7673

For research use only

Overview

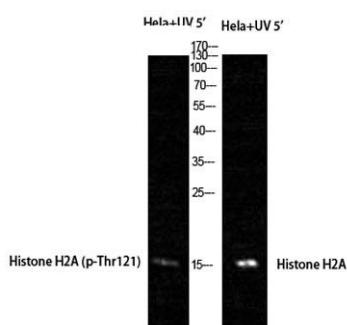
Product Name	Histone H2A (phospho Thr121) rabbit pAb
Host species	Rabbit
Applications	WB;IHC;IF;ELISA
Species	Human;Mouse;Rat
Cross-Reactivity	
Recommended dilutions	WB 1:500-2000 ,Immunohistochemistry: 1/100 - 1/300. ELISA: 1/5000. Not yet tested in other applications.
Immunogen	The antiserum was produced against synthesized peptide derived from human Histone H2A around the phosphorylation site of Thr121. AA range:81-130
Specificity	Phospho-Histone H2A (T121) Polyclonal Antibody detects endogenous levels of Histone H2A protein only when phosphorylated at T121.
Formulation	Liquid in PBS containing 50% glycerol, 0.5% BSA and 0.02% sodium azide.
Storage	Store at -20°C. Avoid repeated freeze-thaw cycles.
Protein Name	Histone H2A type 1-B/E
Gene Name	HIST1H2AB
Cellular localization	Nucleus. Chromosome.
Purification	The antibody was affinity-purified from rabbit antiserum by affinity-chromatography using epitope-specific immunogen.
Clonality	Polyclonal
Concentration	1 mg/ml
Observed band	
Human Gene ID	8329/8332/8336/8969/3012/8335/3013/85235/723790/8337/92815
Human Swiss-Prot Number	P0C0S8/P04908/P20671/Q96KK5/Q6FI13/Q7L7L0
Alternative Names	HIST1H2AG; H2AFP; HIST1H2AI; H2AFC; HIST1H2AK; H2AFD; HIST1H2AL; H2AFI; HIST1H2AM; H2AFN; Histone H2A type 1;



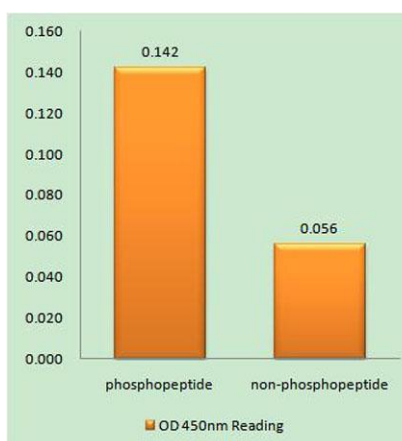
Background

H2A.1; Histone H2A/p; HIST1H2AB; H2AFM; HIST1H2AE; H2AFA; Histone H2A type 1-B/E; Histone H2A.2; Histone H2A/a; Histone H2A/m; HIS

Histones are basic nuclear proteins that are responsible for the nucleosome structure of the chromosomal fiber in eukaryotes. Two molecules of each of the four core histones (H2A, H2B, H3, and H4) form an octamer, around which approximately 146 bp of DNA is wrapped in repeating units, called nucleosomes. The linker histone, H1, interacts with linker DNA between nucleosomes and functions in the compaction of chromatin into higher order structures. This gene is intronless and encodes a replication-dependent histone that is a member of the histone H2A family. Transcripts from this gene lack polyA tails but instead contain a palindromic termination element. This gene is found in the small histone gene cluster on chromosome 6p22-p21.3. [provided by RefSeq, Aug 2015],



Western Blot analysis of HeLa+UV 5' cells using Phospho-Histone H2A (T121) Polyclonal Antibody cells nucleus extracted by Minute TM Cytoplasmic and Nuclear Fractionation kit (SC-003, Invent biotech, MN, USA).



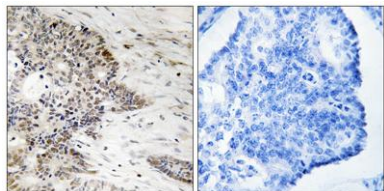
Enzyme-Linked Immunosorbent Assay (Phospho-ELISA) for Immunogen Phosphopeptide (Phospho-left) and Non-Phosphopeptide (Phospho-right), using Histone H2A (Phospho-Thr121) Antibody





ELK Biotechnology

Immunohistochemistry analysis of paraffin-embedded human colon carcinoma, using Histone H2A (Phospho-Thr121) Antibody. The picture on the right is blocked with the phospho peptide.



+86-27-59760950

ELKbio@ELKbiotech.com

www.elkbiotech.com

23-2, No.388 Gaoxin 2nd Road, Wuhan East Lake Hi-tech Development Zone, Hubei, P.R.C.