



CNTD2 rabbit pAb

Cat No.:ES7601

For research use only

Overview

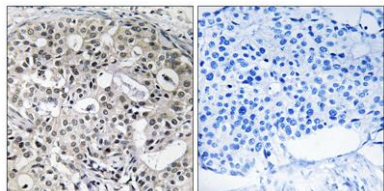
| | |
|---------------------------------|---|
| Product Name | CNTD2 rabbit pAb |
| Host species | Rabbit |
| Applications | IHC;IF;ELISA |
| Species Cross-Reactivity | Human;Rat;Mouse; |
| Recommended dilutions | Immunohistochemistry: 1/100 - 1/300. ELISA: 1/40000. Not yet tested in other applications. |
| Immunogen | The antiserum was produced against synthesized peptide derived from human CNTD2. AA range:51-100 |
| Specificity | CNTD2 Polyclonal Antibody detects endogenous levels of CNTD2 protein. |
| Formulation | Liquid in PBS containing 50% glycerol, 0.5% BSA and 0.02% sodium azide. |
| Storage | Store at -20°C. Avoid repeated freeze-thaw cycles. |
| Protein Name | Cyclin N-terminal domain-containing protein 2 |
| Gene Name | CNTD2 |
| Cellular localization | Nucleus . |
| Purification | The antibody was affinity-purified from rabbit antiserum by affinity-chromatography using epitope-specific immunogen. |
| Clonality | Polyclonal |
| Concentration | 1 mg/ml |
| Observed band | |
| Human Gene ID | 79935 |
| Human Swiss-Prot Number | Q9H8S5 |
| Alternative Names | CNTD2; Cyclin N-terminal domain-containing protein 2 |
| Background | similarity:Belongs to the cyclin family.,similarity:Contains 1 cyclin N-terminal domain., |





ELK Biotechnology

Immunohistochemistry analysis of paraffin-embedded human breast carcinoma, using CNTD2 Antibody. The picture on the right is blocked with the synthesized peptide.



+86-27-59760950

ELKbio@ELKbiotech.com

www.elkbiotech.com

23-2, No.388 Gaoxin 2nd Road, Wuhan East Lake Hi-tech Development Zone, Hubei, P.R.C