



Cacna2d1 rabbit pAb

Cat No.:ES7556

For research use only

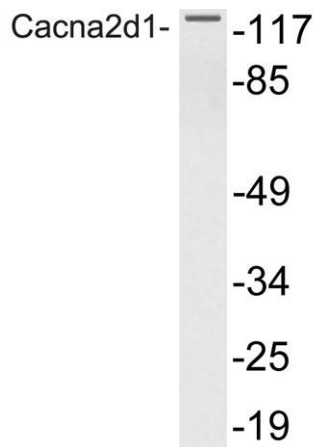
Overview

Product Name	Cacna2d1 rabbit pAb
Host species	Rabbit
Applications	WB;ELISA
Species Cross-Reactivity	Human;Mouse;Rat
Recommended dilutions	Western Blot: 1/500 - 1/2000. ELISA: 1/10000. Not yet tested in other applications.
Immunogen	The antiserum was produced against synthesized peptide derived from human Cacna2d1. AA range:90-139
Specificity	Cacna2d1 Polyclonal Antibody detects endogenous levels of Cacna2d1 protein.
Formulation	Liquid in PBS containing 50% glycerol, 0.5% BSA and 0.02% sodium azide.
Storage	Store at -20°C. Avoid repeated freeze-thaw cycles.
Protein Name	Voltage-dependent calcium channel subunit alpha-2/delta-1
Gene Name	CACNA2D1
Cellular localization	Membrane ; Single-pass type I membrane protein .
Purification	The antibody was affinity-purified from rabbit antiserum by affinity-chromatography using epitope-specific immunogen.
Clonality	Polyclonal
Concentration	1 mg/ml
Observed band	123kD
Human Gene ID	781
Human Swiss-Prot Number	P54289
Alternative Names	CACNA2D1; CACNL2A; CCHL2A; MHS3; Voltage-dependent calcium channel subunit alpha-2/delta-1; Voltage-gated calcium channel subunit alpha-2/delta-1
Background	calcium voltage-gated channel auxiliary subunit alpha2delta 1(CACNA2D1) Homo sapiens The preproprotein encoded by this gene is cleaved into





multiple chains that comprise the alpha-2 and delta subunits of the voltage-dependent calcium channel complex. Calcium channels mediate the influx of calcium ions into the cell upon membrane polarization. Mutations in this gene can cause cardiac deficiencies, including Brugada syndrome and short QT syndrome. Alternate splicing results in multiple transcript variants, some of which may lack the delta subunit portion. [provided by RefSeq, Nov 2014],



Western blot analysis of lysate from NIH/3T3 cells, using Cacna2d1 antibody.

