

# TRH-R1 rabbit pAb

Cat No.:ES7446

For research use only

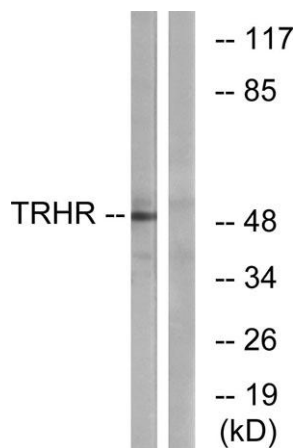
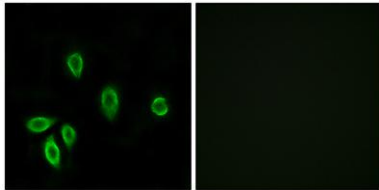
## Overview

Product Name	TRH-R1 rabbit pAb
Host species	Rabbit
Applications	WB;IF;ELISA
Species Cross-Reactivity	Human;Mouse;Rat;Monkey
Recommended dilutions	Western Blot: 1/500 - 1/2000. Immunofluorescence: 1/200 - 1/1000. ELISA: 1/20000. Not yet tested in other applications.
Immunogen	The antiserum was produced against synthesized peptide derived from human TRHR. AA range:195-244
Specificity	TRH-R1 Polyclonal Antibody detects endogenous levels of TRH-R1 protein.
Formulation	Liquid in PBS containing 50% glycerol, 0.5% BSA and 0.02% sodium azide.
Storage	Store at -20°C. Avoid repeated freeze-thaw cycles.
Protein Name	Thyrotropin-releasing hormone receptor
Gene Name	TRHR
Cellular localization	Cell membrane ; Multi-pass membrane protein .
Purification	The antibody was affinity-purified from rabbit antiserum by affinity-chromatography using epitope-specific immunogen.
Clonality	Polyclonal
Concentration	1 mg/ml
Observed band	50kD
Human Gene ID	7201
Human Swiss-Prot Number	P34981
Alternative Names	TRHR; Thyrotropin-releasing hormone receptor; TRH-R; Thyroliberin receptor
Background	This gene encodes a G protein-coupled receptor for thyrotropin-releasing hormone (TRH). Upon binding to TRH, this receptor activates the inositol phospholipid-calcium-protein kinase C transduction pathway. Mutations in this gene have been

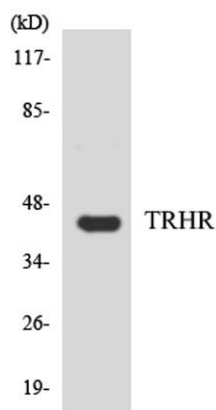


associated with generalized thyrotropin-releasing hormone resistance. [provided by RefSeq, Sep 2011],

Immunofluorescence analysis of A549 cells, using TRHR Antibody. The picture on the right is blocked with the synthesized peptide.



Western blot analysis of lysates from COS7 cells, using TRHR Antibody. The lane on the right is blocked with the synthesized peptide.



Western blot analysis of the lysates from HepG2 cells using TRHR antibody.

