



# Stat1 (phospho Ser727) rabbit pAb

Cat No.:ES7294

For research use only

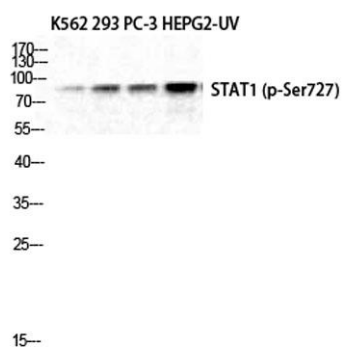
## Overview

Product Name	Stat1 (phospho Ser727) rabbit pAb
Host species	Rabbit
Applications	WB;IHC;IF;ELISA
Species Cross-Reactivity	Human;Mouse;Rat
Recommended dilutions	Western Blot: 1/500 - 1/2000. Immunohistochemistry: 1/100 - 1/300. ELISA: 1/10000. Not yet tested in other applications.
Immunogen	The antiserum was produced against synthesized peptide derived from human STAT1 around the phosphorylation site of Ser727. AA range:694-743
Specificity	Phospho-Stat1 (S727) Polyclonal Antibody detects endogenous levels of Stat1 protein only when phosphorylated at S727.
Formulation	Liquid in PBS containing 50% glycerol, 0.5% BSA and 0.02% sodium azide.
Storage	Store at -20°C. Avoid repeated freeze-thaw cycles.
Protein Name	Signal transducer and activator of transcription 1-alpha/beta
Gene Name	STAT1
Cellular localization	Cytoplasm . Nucleus . Translocated into the nucleus upon tyrosine phosphorylation and dimerization, in response to IFN-gamma and signaling by activated FGFR1, FGFR2, FGFR3 or FGFR4 (PubMed:15322115). Monomethylation at Lys-525 is required for phosphorylation at Tyr-701 and translocation into the nucleus (PubMed:28753426). Translocates into the nucleus in response to interferon-beta stimulation (PubMed:26479788). .
Purification	The antibody was affinity-purified from rabbit antiserum by affinity-chromatography using epitope-specific immunogen.
Clonality	Polyclonal
Concentration	1 mg/ml



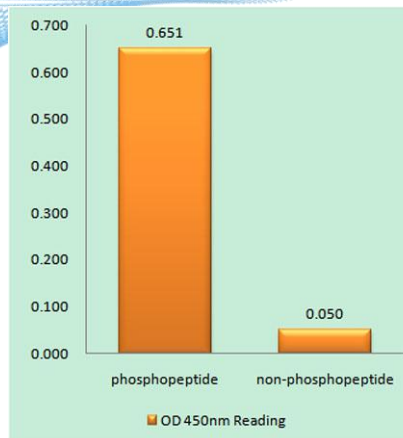


<b>Observed band</b>	87kD
<b>Human Gene ID</b>	6772
<b>Human Swiss-Prot Number</b>	P42224
<b>Alternative Names</b>	STAT1; Signal transducer and activator of transcription 1-alpha/beta; Transcription factor ISGF-3 components p91/p84
<b>Background</b>	<p>The protein encoded by this gene is a member of the STAT protein family. In response to cytokines and growth factors, STAT family members are phosphorylated by the receptor associated kinases, and then form homo- or heterodimers that translocate to the cell nucleus where they act as transcription activators. This protein can be activated by various ligands including interferon-alpha, interferon-gamma, EGF, PDGF and IL6. This protein mediates the expression of a variety of genes, which is thought to be important for cell viability in response to different cell stimuli and pathogens. Two alternatively spliced transcript variants encoding distinct isoforms have been described. [provided by RefSeq, Jul 2008],</p>



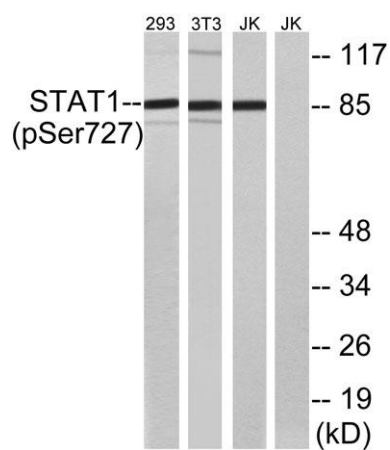
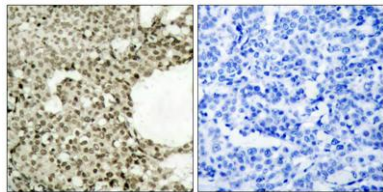
Western Blot analysis of K562 293 PC-3 HepG2-UV cells using Phospho-Stat1 (S727) Polyclonal Antibody diluted at 1:1000





Enzyme-Linked Immunosorbent Assay (Phospho-ELISA) for Immunogen Phosphopeptide (Phospho-left) and Non-Phosphopeptide (Phospho-right), using STAT1 (Phospho-Ser727) Antibody

Immunohistochemistry analysis of paraffin-embedded human breast carcinoma, using STAT1 (Phospho-Ser727) Antibody. The picture on the right is blocked with the phospho peptide.



Western blot analysis of lysates from 293 cells, 3T3 cells treated with UV (15mins) and Jurkat cells treated with eto (25uM, 24hours), using STAT1 (Phospho-Ser727) Antibody. The lane on the right is blocked with the phosphopeptide.

