



# Slit3 rabbit pAb

Cat No.:ES7236

For research use only

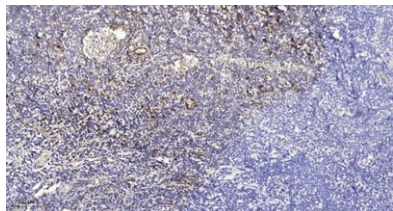
## Overview

<b>Product Name</b>	Slit3 rabbit pAb
<b>Host species</b>	Rabbit
<b>Applications</b>	IHC;IF;ELISA
<b>Species Cross-Reactivity</b>	Human;Mouse;Rat
<b>Recommended dilutions</b>	Immunohistochemistry: 1/100 - 1/300. ELISA: 1/40000. Not yet tested in other applications.
<b>Immunogen</b>	Synthesized peptide derived from the Internal region of human Slit3.
<b>Specificity</b>	Slit3 Polyclonal Antibody detects endogenous levels of Slit3 protein.
<b>Formulation</b>	Liquid in PBS containing 50% glycerol, 0.5% BSA and 0.02% sodium azide.
<b>Storage</b>	Store at -20°C. Avoid repeated freeze-thaw cycles.
<b>Protein Name</b>	Slit homolog 3 protein
<b>Gene Name</b>	SLIT3
<b>Cellular localization</b>	Secreted .
<b>Purification</b>	The antibody was affinity-purified from rabbit antiserum by affinity-chromatography using epitope-specific immunogen.
<b>Clonality</b>	Polyclonal
<b>Concentration</b>	1 mg/ml
<b>Observed band</b>	
<b>Human Gene ID</b>	6586
<b>Human Swiss-Prot Number</b>	O75094
<b>Alternative Names</b>	SLIT3; KIAA0814; MEGF5; SLIL2; Slit homolog 3 protein; Slit-3; Multiple epidermal growth factor-like domains protein 5; Multiple EGF-like domains protein 5
<b>Background</b>	The protein encoded by this gene is secreted, likely interacting with roundabout homolog receptors to effect cell migration. Two transcript variants encoding different isoforms have been found for this gene. [provided by RefSeq, Dec 2012],





**ELK Biotechnology**



Immunohistochemical analysis of paraffin-embedded human tonsil. 1, Antibody was diluted at 1:200(4° overnight). 2, Tris-EDTA,pH9.0 was used for antigen retrieval. 3,Secondary antibody was diluted at 1:200(room temperature, 30min).



+86-27-59760950

[ELKbio@ELKbiotech.com](mailto:ELKbio@ELKbiotech.com)

[www.elkbiotech.com](http://www.elkbiotech.com)

23-2, No.388 Gaoxin 2nd Road,Wuhan East Lake Hi-tech Development Zone, Hubei , P.R.C