



ENaC δ rabbit pAb

Cat No.:ES7127

For research use only

Overview

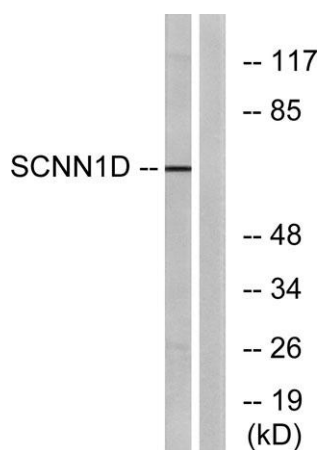
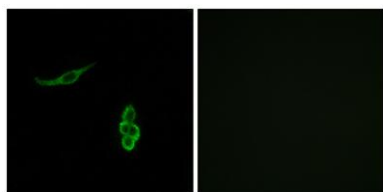
Product Name	ENaC δ rabbit pAb
Host species	Rabbit
Applications	WB;IF;ELISA
Species Cross-Reactivity	Human;Rat;Mouse;
Recommended dilutions	Western Blot: 1/500 - 1/2000. Immunofluorescence: 1/200 - 1/1000. ELISA: 1/20000. Not yet tested in other applications.
Immunogen	The antiserum was produced against synthesized peptide derived from human SCNN1D. AA range:411-460
Specificity	ENaC δ Polyclonal Antibody detects endogenous levels of ENaC δ protein.
Formulation	Liquid in PBS containing 50% glycerol, 0.5% BSA and 0.02% sodium azide.
Storage	Store at -20°C. Avoid repeated freeze-thaw cycles.
Protein Name	Amiloride-sensitive sodium channel subunit delta
Gene Name	SCNN1D
Cellular localization	Cell membrane ; Multi-pass membrane protein .
Purification	The antibody was affinity-purified from rabbit antiserum by affinity-chromatography using epitope-specific immunogen.
Clonality	Polyclonal
Concentration	1 mg/ml
Observed band	70kD
Human Gene ID	6339
Human Swiss-Prot Number	P51172
Alternative Names	SCNN1D; DNACH; Amiloride-sensitive sodium channel subunit delta; Delta-NaCH; Epithelial Na(+) channel subunit delta; Delta-ENaC; ENaCD; Nonvoltage-gated sodium channel 1 subunit delta; SCNED
Background	function:Sodium permeable non-voltage-sensitive ion channel inhibited by the diuretic amiloride.





Mediates the electrodiffusion of the luminal sodium (and water, which follows osmotically) through the apical membrane of epithelial cells. Controls the reabsorption of sodium in kidney, colon, lung and sweat glands. Also plays a role in taste perception.,similarity:Belongs to the amiloride-sensitive sodium channel family.,subunit:Heterotetramer of two alpha, one beta and one gamma subunit. A delta subunit can replace the alpha subunit.,

Immunofluorescence analysis of A549 cells, using SCNN1D Antibody. The picture on the right is blocked with the synthesized peptide.

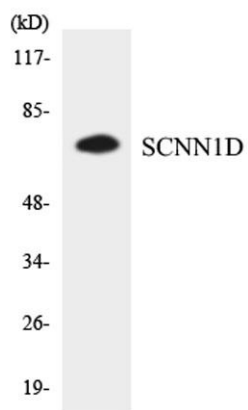


Western blot analysis of lysates from RAW264.7 cells, using SCNN1D Antibody. The lane on the right is blocked with the synthesized peptide.





ELK Biotechnology



Western blot analysis of the lysates from HT-29 cells using SCNN1D antibody.



+86-27-59760950

ELKbio@ELKbiotech.com

www.elkbiotech.com

23-2, No.388 Gaoxin 2nd Road,Wuhan East Lake Hi-tech Development Zone, Hubei , P.R.C