

GRIN3 rabbit pAb

Cat No.:ES5610

For research use only

Overview

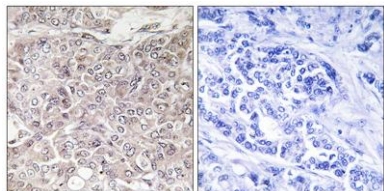
Product Name	GRIN3 rabbit pAb
Host species	Rabbit
Applications	IHC;IF;ELISA
Species Cross-Reactivity	Human;Rat;Mouse;
Recommended dilutions	Immunohistochemistry: 1/100 - 1/300. ELISA: 1/40000. Not yet tested in other applications.
Immunogen	The antiserum was produced against synthesized peptide derived from human GPRIN3. AA range:131-180
Specificity	GRIN3 Polyclonal Antibody detects endogenous levels of GRIN3 protein.
Formulation	Liquid in PBS containing 50% glycerol, 0.5% BSA and 0.02% sodium azide.
Storage	Store at -20°C. Avoid repeated freeze-thaw cycles.
Protein Name	G protein-regulated inducer of neurite outgrowth 3
Gene Name	GPRIN3
Cellular localization	
Purification	The antibody was affinity-purified from rabbit antiserum by affinity-chromatography using epitope-specific immunogen.
Clonality	Polyclonal
Concentration	1 mg/ml
Observed band	
Human Gene ID	285513
Human Swiss-Prot Number	Q6ZVF9
Alternative Names	GPRIN3; KIAA2027; G protein-regulated inducer of neurite outgrowth 3; GRIN3
Background	function:May be involved in neurite outgrowth.,





ELK Biotechnology

Immunohistochemistry analysis of paraffin-embedded human breast carcinoma, using GPRIN3 Antibody. The picture on the right is blocked with the synthesized peptide.



+86-27-59760950

ELKbio@ELKbiotech.com

www.elkbiotech.com

23-2, No.388 Gaoxin 2nd Road, Wuhan East Lake Hi-tech Development Zone, Hubei, P.R.C