



# cPLA2- $\delta$ rabbit pAb

Cat No.:ES5588

For research use only

## Overview

<b>Product Name</b>	cPLA2- $\delta$ rabbit pAb
<b>Host species</b>	Rabbit
<b>Applications</b>	IHC;IF;ELISA
<b>Species Cross-Reactivity</b>	Human;Rat;Mouse;
<b>Recommended dilutions</b>	Immunohistochemistry: 1/100 - 1/300. ELISA: 1/40000. Not yet tested in other applications.
<b>Immunogen</b>	The antiserum was produced against synthesized peptide derived from human PLA2G4D. AA range:531-580
<b>Specificity</b>	cPLA2- $\delta$ Polyclonal Antibody detects endogenous levels of cPLA2- $\delta$ protein.
<b>Formulation</b>	Liquid in PBS containing 50% glycerol, 0.5% BSA and 0.02% sodium azide.
<b>Storage</b>	Store at -20°C. Avoid repeated freeze-thaw cycles.
<b>Protein Name</b>	Cytosolic phospholipase A2 delta
<b>Gene Name</b>	PLA2G4D
<b>Cellular localization</b>	Cytoplasm, cytosol . Membrane ; Peripheral membrane protein ; Cytoplasmic side . Translocates to perinuclear membranes that may correspond to endoplasmic reticulum or Golgi in a calcium-dependent fashion. .
<b>Purification</b>	The antibody was affinity-purified from rabbit antiserum by affinity-chromatography using epitope-specific immunogen.
<b>Clonality</b>	Polyclonal
<b>Concentration</b>	1 mg/ml
<b>Observed band</b>	
<b>Human Gene ID</b>	283748
<b>Human Swiss-Prot Number</b>	Q86XP0
<b>Alternative Names</b>	PLA2G4D; Cytosolic phospholipase A2 delta; cPLA2-delta; Phospholipase A2 group IVD
<b>Background</b>	The phospholipase A2 enzyme family, including PLA2G4D, catalyze the hydrolysis of

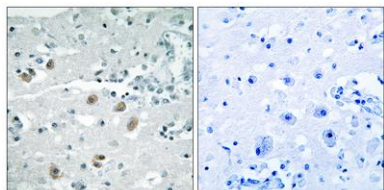




**ELK Biotechnology**

glycerophospholipids at the sn-2 position and then liberate free fatty acids and lysophospholipids (Chiba et al., 2004 [PubMed 14709560]).[supplied by OMIM, Jun 2009],

Immunohistochemistry analysis of paraffin-embedded human brain, using PLA2G4D Antibody. The picture on the right is blocked with the synthesized peptide.



+86-27-59760950

[ELKbio@ELKbiotech.com](mailto:ELKbio@ELKbiotech.com)

[www.elkbiotech.com](http://www.elkbiotech.com)

23-2, No.388 Gaoxin 2nd Road,Wuhan East Lake Hi-tech Development Zone, Hubei , P.R.C