



# ZKSCAN5 rabbit pAb

Cat No.:ES5377

For research use only

## Overview

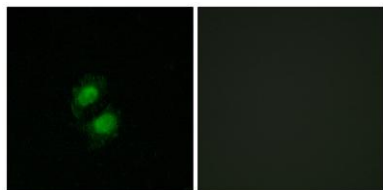
<b>Product Name</b>	ZKSCAN5 rabbit pAb
<b>Host species</b>	Rabbit
<b>Applications</b>	IHC;IF;ELISA
<b>Species Cross-Reactivity</b>	Human;Rat;Mouse;
<b>Recommended dilutions</b>	Immunohistochemistry: 1/100 - 1/300. Immunofluorescence: 1/200 - 1/1000. ELISA: 1/5000. Not yet tested in other applications.
<b>Immunogen</b>	The antiserum was produced against synthesized peptide derived from human ZNF95. AA range:291-340
<b>Specificity</b>	ZKSCAN5 Polyclonal Antibody detects endogenous levels of ZKSCAN5 protein.
<b>Formulation</b>	Liquid in PBS containing 50% glycerol, 0.5% BSA and 0.02% sodium azide.
<b>Storage</b>	Store at -20°C. Avoid repeated freeze-thaw cycles.
<b>Protein Name</b>	Zinc finger protein with KRAB and SCAN domains 5
<b>Gene Name</b>	ZKSCAN5
<b>Cellular localization</b>	Nucleus .
<b>Purification</b>	The antibody was affinity-purified from rabbit antiserum by affinity-chromatography using epitope-specific immunogen.
<b>Clonality</b>	Polyclonal
<b>Concentration</b>	1 mg/ml
<b>Observed band</b>	
<b>Human Gene ID</b>	23660
<b>Human Swiss-Prot Number</b>	Q9Y2L8
<b>Alternative Names</b>	ZKSCAN5; KIAA1015; ZFP95; Zinc finger protein with KRAB and SCAN domains 5; Zinc finger protein 95 homolog; Zfp-95
<b>Background</b>	This gene encodes a zinc finger protein of the Kruppel family. The protein contains a SCAN box and a KRAB A domain and may be involved in transcriptional regulation. A similar protein in





mouse is differentially expressed in spermatogenesis. Alternative splicing results in multiple transcript variants. [provided by RefSeq, Dec 2015],

Immunofluorescence analysis of A549 cells, using ZNF95 Antibody. The picture on the right is blocked with the synthesized peptide.



Immunohistochemical analysis of paraffin-embedded human brain tumor. 1, Antibody was diluted at 1:200(4° overnight). 2, Tris-EDTA,pH9.0 was used for antigen retrieval. 3,Secondary antibody was diluted at 1:200(room temperature, 45min).

