



ZnT-9 rabbit pAb

Cat No.:ES4479

For research use only

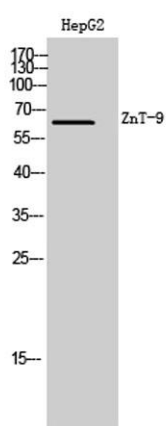
Overview

Product Name	ZnT-9 rabbit pAb
Host species	Rabbit
Applications	WB;ELISA
Species Cross-Reactivity	Human;Mouse;Rat
Recommended dilutions	Western Blot: 1/500 - 1/2000. ELISA: 1/20000. Not yet tested in other applications.
Immunogen	The antiserum was produced against synthesized peptide derived from human SLC30A9. AA range:181-230
Specificity	ZnT-9 Polyclonal Antibody detects endogenous levels of ZnT-9 protein.
Formulation	Liquid in PBS containing 50% glycerol, 0.5% BSA and 0.02% sodium azide.
Storage	Store at -20°C. Avoid repeated freeze-thaw cycles.
Protein Name	Zinc transporter 9
Gene Name	SLC30A9
Cellular localization	Membrane ; Multi-pass membrane protein . Nucleus . Cytoplasm . Cytoplasmic vesicle . Endoplasmic reticulum . Mainly in the cytoplasm (PubMed:10409434). Partial co-localization with endoplasmic reticulum (PubMed:28334855). .
Purification	The antibody was affinity-purified from rabbit antiserum by affinity-chromatography using epitope-specific immunogen.
Clonality	Polyclonal
Concentration	1 mg/ml
Observed band	63kD
Human Gene ID	10463
Human Swiss-Prot Number	Q6PML9
Alternative Names	SLC30A9; C4orf1; HUEL; Zinc transporter 9; ZnT-9; Human embryonic lung protein; HuEL; Solute carrier family 30 member 9
Background	function:Plays a role in the p160 coactivator

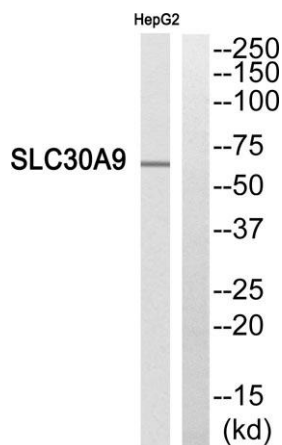




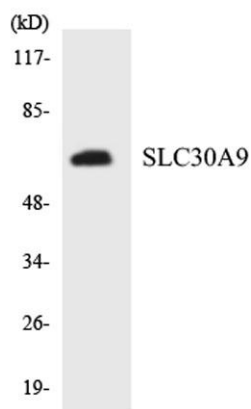
signaling pathway that mediates transcriptional activation by nuclear receptors (By similarity). Plays a role in transcriptional activation of Wnt-responsive genes.,similarity:Belongs to the cation diffusion facilitator (CDF) transporter (TC 2.A.4) family. SLC30A subfamily.,subunit:Interacts with GRIP1, ESR1 and AR.,tissue specificity:Ubiquitously expressed in fetal and adult tissues and cancer cell lines.,



Western Blot analysis of HepG2 cells using ZnT-9 Polyclonal Antibody. Secondary antibody(catalog#:RS0002) was diluted at 1:20000



Western blot analysis of SLC30A9 Antibody. The lane on the right is blocked with the SLC30A9 peptide.



Western blot analysis of the lysates from K562 cells using SLC30A9 antibody.





ELK Biotechnology



+86-27-59760950

ELKbio@ELKbiotech.com

www.elkbiotech.com

23-2, No.388 Gaoxin 2nd Road,Wuhan East Lake Hi-tech Development Zone, Hubei , P.R.C