



M-CSF rabbit pAb

Cat No.:ES4283

For research use only

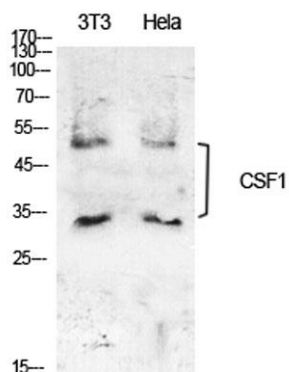
Overview

Product Name	M-CSF rabbit pAb
Host species	Rabbit
Applications	WB;IHC;IF;ELISA
Species Cross-Reactivity	Human;Rat;Mouse;
Recommended dilutions	Western Blot: 1/500 - 1/2000. IHC-p: 1:100-1:300. ELISA: 1/10000. Not yet tested in other applications.
Immunogen	The antiserum was produced against synthesized peptide derived from the C-terminal region of human CSF1. AA range:505-554
Specificity	M-CSF Polyclonal Antibody detects endogenous levels of M-CSF protein.
Formulation	Liquid in PBS containing 50% glycerol, 0.5% BSA and 0.02% sodium azide.
Storage	Store at -20°C. Avoid repeated freeze-thaw cycles.
Protein Name	Macrophage colony-stimulating factor 1
Gene Name	CSF1
Cellular localization	Cell membrane ; Single-pass type I membrane protein .; [Processed macrophage colony-stimulating factor 1]: Secreted, extracellular space.
Purification	The antibody was affinity-purified from rabbit antiserum by affinity-chromatography using epitope-specific immunogen.
Clonality	Polyclonal
Concentration	1 mg/ml
Observed band	48kD
Human Gene ID	1435
Human Swiss-Prot Number	P09603
Alternative Names	CSF1; Macrophage colony-stimulating factor 1; CSF-1; M-CSF; MCSF; Lanimostim
Background	The protein encoded by this gene is a cytokine that controls the production, differentiation, and function of macrophages. The active form of the protein is found extracellularly as a disulfide-linked

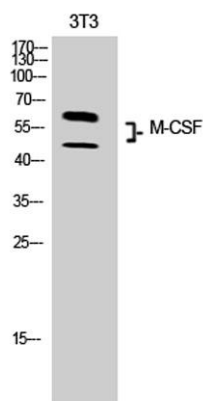




homodimer, and is thought to be produced by proteolytic cleavage of membrane-bound precursors. The encoded protein may be involved in development of the placenta. Alternate splicing results in multiple transcript variants. [provided by RefSeq, Sep 2011],

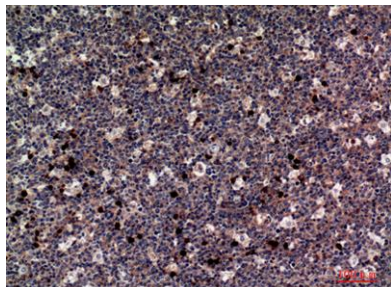


Western Blot analysis of NIH-3T3, HeLa cells using M-CSF Polyclonal Antibody. Secondary antibody(catalog#:RS0002) was diluted at 1:20000



Western Blot analysis of 3T3 cells using M-CSF Polyclonal Antibody. Secondary antibody(catalog#:RS0002) was diluted at 1:20000

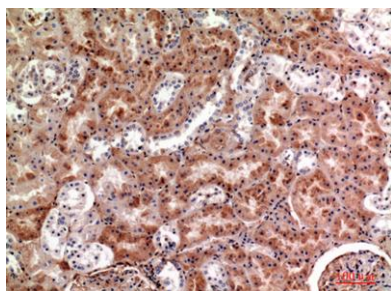
Immunohistochemical analysis of paraffin-embedded human-tonsils, antibody was diluted at 1:100





ELK Biotechnology

Immunohistochemical analysis of paraffin-embedded human-kidney, antibody was diluted at 1:100



+86-27-59760950

ELKbio@ELKbiotech.com

www.elkbiotech.com

23-2, No.388 Gaoxin 2nd Road,Wuhan East Lake Hi-tech Development Zone, Hubei , P.R.C