



G-CSFR rabbit pAb

Cat No.:ES4257

For research use only

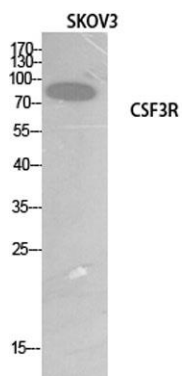
Overview

Product Name	G-CSFR rabbit pAb
Host species	Rabbit
Applications	WB;ELISA
Species Cross-Reactivity	Human;Rat;Mouse;
Recommended dilutions	Western Blot: 1/500 - 1/2000. ELISA: 1/20000. Not yet tested in other applications.
Immunogen	The antiserum was produced against synthesized peptide derived from the Internal region of human CSF3R. AA range:321-370
Specificity	G-CSFR Polyclonal Antibody detects endogenous levels of G-CSFR protein.
Formulation	Liquid in PBS containing 50% glycerol, 0.5% BSA and 0.02% sodium azide.
Storage	Store at -20°C. Avoid repeated freeze-thaw cycles.
Protein Name	Granulocyte colony-stimulating factor receptor
Gene Name	CSF3R
Cellular localization	[Isoform 2]: Secreted .; Cell membrane ; Single-pass type I membrane protein .
Purification	The antibody was affinity-purified from rabbit antiserum by affinity-chromatography using epitope-specific immunogen.
Clonality	Polyclonal
Concentration	1 mg/ml
Observed band	92kD
Human Gene ID	1441
Human Swiss-Prot Number	Q99062
Alternative Names	CSF3R; GCSFR; Granulocyte colony-stimulating factor receptor; G-CSF receptor; G-CSF-R; CD114
Background	The protein encoded by this gene is the receptor for colony stimulating factor 3, a cytokine that controls the production, differentiation, and function of granulocytes. The encoded protein, which is a member of the family of cytokine receptors, may





also function in some cell surface adhesion or recognition processes. Alternatively spliced transcript variants have been described. Mutations in this gene are a cause of Kostmann syndrome, also known as severe congenital neutropenia. [provided by RefSeq, Aug 2010],



Western Blot analysis of SKOV3 cells using G-CSFR Polyclonal Antibody. Secondary antibody(catalog#:RS0002) was diluted at 1:20000

