



CD116 rabbit pAb

Cat No.:ES3992

For research use only

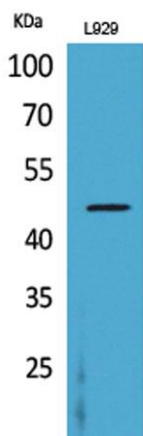
Overview

Product Name	CD116 rabbit pAb
Host species	Rabbit
Applications	WB;IHC;IF;ELISA
Species Cross-Reactivity	Human;Rat;Mouse;
Recommended dilutions	Western Blot: 1/500 - 1/2000. IHC-p: 1:100-300 ELISA: 1/20000. Not yet tested in other applications.
Immunogen	The antiserum was produced against synthesized peptide derived from the Internal region of human CSF2RA. AA range:121-170
Specificity	CD116 Polyclonal Antibody detects endogenous levels of CD116 protein.
Formulation	Liquid in PBS containing 50% glycerol, 0.5% BSA and 0.02% sodium azide.
Storage	Store at -20°C. Avoid repeated freeze-thaw cycles.
Protein Name	Granulocyte-macrophage colony-stimulating factor receptor subunit alpha
Gene Name	CSF2RA
Cellular localization	Cell membrane; Single-pass type I membrane protein.; [Isoform 3]: Secreted .; [Isoform 4]: Secreted .; [Isoform 6]: Secreted .
Purification	The antibody was affinity-purified from rabbit antiserum by affinity-chromatography using epitope-specific immunogen.
Clonality	Polyclonal
Concentration	1 mg/ml
Observed band	44kD
Human Gene ID	1438
Human Swiss-Prot Number	P15509
Alternative Names	CSF2RA; CSF2R; CSF2RY; Granulocyte-macrophage colony-stimulating factor receptor subunit alpha; GM-CSF-R-alpha; GMCSFR-alpha; GMR-alpha; CDw116; CD116
Background	The protein encoded by this gene is the alpha



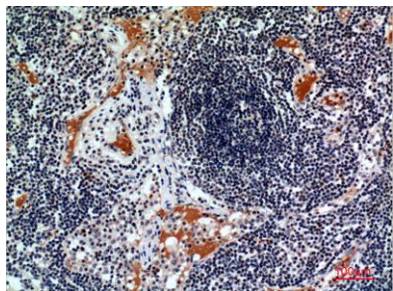


subunit of the heterodimeric receptor for colony stimulating factor 2, a cytokine which controls the production, differentiation, and function of granulocytes and macrophages. The encoded protein is a member of the cytokine family of receptors. This gene is found in the pseudoautosomal region (PAR) of the X and Y chromosomes. Multiple transcript variants encoding different isoforms have been found for this gene, with some of the isoforms being membrane-bound and others being soluble. [provided by RefSeq, Jul 2008],



Western Blot analysis of L929 cells using CD116 Polyclonal Antibody. Secondary antibody(catalog#:RS0002) was diluted at 1:20000

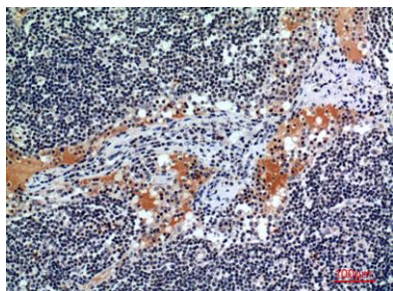
Immunohistochemical analysis of paraffin-embedded human-lymph, antibody was diluted at 1:100



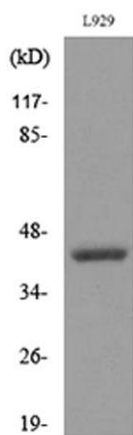


ELK Biotechnology

Immunohistochemical analysis of paraffin-embedded human-lymph, antibody was diluted at 1:100



Western blot analysis of lysate from L929 cells, using CSF2RA Antibody.



+86-27-59760950

ELKbio@ELKbiotech.com

www.elkbiotech.com

23-2, No.388 Gaoxin 2nd Road, Wuhan East Lake Hi-tech Development Zone, Hubei, P.R.C