



# CD100 rabbit pAb

Cat No.:ES3989

For research use only

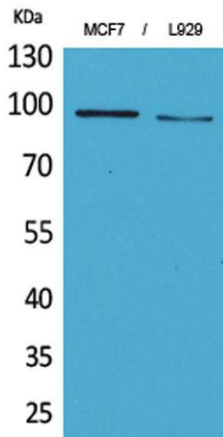
## Overview

<b>Product Name</b>	CD100 rabbit pAb
<b>Host species</b>	Rabbit
<b>Applications</b>	WB;ELISA
<b>Species Cross-Reactivity</b>	Human;Mouse;Rat
<b>Recommended dilutions</b>	Western Blot: 1/500 - 1/2000. ELISA: 1/20000. Not yet tested in other applications.
<b>Immunogen</b>	The antiserum was produced against synthesized peptide derived from the N-terminal region of human SEMA4D. AA range:61-110
<b>Specificity</b>	CD100 Polyclonal Antibody detects endogenous levels of CD100 protein.
<b>Formulation</b>	Liquid in PBS containing 50% glycerol, 0.5% BSA and 0.02% sodium azide.
<b>Storage</b>	Store at -20°C. Avoid repeated freeze-thaw cycles.
<b>Protein Name</b>	Semaphorin-4D
<b>Gene Name</b>	SEMA4D
<b>Cellular localization</b>	Cell membrane ; Single-pass type I membrane protein .
<b>Purification</b>	The antibody was affinity-purified from rabbit antiserum by affinity-chromatography using epitope-specific immunogen.
<b>Clonality</b>	Polyclonal
<b>Concentration</b>	1 mg/ml
<b>Observed band</b>	95kD
<b>Human Gene ID</b>	10507
<b>Human Swiss-Prot Number</b>	Q92854
<b>Alternative Names</b>	SEMA4D; C9orf164; CD100; SEMAJ; Semaphorin-4D; A8; BB18; GR3; CD100
<b>Background</b>	function:May play a functional role in the immune system, as well as in the nervous system. Induces B-cells to aggregate and improves their viability in vitro.,similarity:Belongs to the semaphorin family.,similarity:Contains 1 Ig-like C2-type

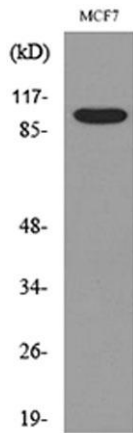




(immunoglobulin-like) domain.,similarity:Contains 1 PSI domain.,similarity:Contains 1 Sema domain.,subunit:Homodimer. Binds PLXNB1.,tissue specificity:Strongly expressed in skeletal muscle, peripheral blood lymphocytes, spleen, and thymus and also expressed at lower levels in testes, brain, kidney, small intestine, prostate, heart, placenta, lung and pancreas, but not in colon and liver.,



Western Blot analysis of MCF7, L929 cells using CD100 Polyclonal Antibody. Secondary antibody(catalog#:RS0002) was diluted at 1:20000



Western blot analysis of lysate from MCF7 cells, using SEMA4D Antibody.

