



# Fascin 1 rabbit pAb

Cat No.:ES3942

For research use only

## Overview

<b>Product Name</b>	Fascin 1 rabbit pAb
<b>Host species</b>	Rabbit
<b>Applications</b>	WB;IHC;IF;ELISA
<b>Species Cross-Reactivity</b>	Human;Mouse;Rat
<b>Recommended dilutions</b>	Western Blot: 1/500 - 1/2000. IHC-p: 1:100-300 ELISA: 1/20000. Not yet tested in other applications.
<b>Immunogen</b>	The antiserum was produced against synthesized peptide derived from the Internal region of human FSCN1. AA range:261-310
<b>Specificity</b>	Fascin 1 Polyclonal Antibody detects endogenous levels of Fascin 1 protein.
<b>Formulation</b>	Liquid in PBS containing 50% glycerol, 0.5% BSA and 0.02% sodium azide.
<b>Storage</b>	Store at -20°C. Avoid repeated freeze-thaw cycles.
<b>Protein Name</b>	Fascin
<b>Gene Name</b>	FSCN1
<b>Cellular localization</b>	Cytoplasm, cytosol . Cytoplasm, cell cortex . Cytoplasm, cytoskeleton . Cytoplasm, cytoskeleton, stress fiber . Cell projection, filopodium . Cell projection, invadopodium . Cell projection, microvillus . Cell junction . Colocalized with RUFY3 and F-actin at filipodia of the axonal growth cone. Colocalized with DBN1 and F-actin at the transitional domain of the axonal growth cone (By similarity) .
<b>Purification</b>	The antibody was affinity-purified from rabbit antiserum by affinity-chromatography using epitope-specific immunogen.
<b>Clonality</b>	Polyclonal
<b>Concentration</b>	1 mg/ml
<b>Observed band</b>	55kD
<b>Human Gene ID</b>	6624
<b>Human Swiss-Prot Number</b>	Q16658
<b>Alternative Names</b>	FSCN1; FAN1; HSN; SNL; Fascin; 55 kDa

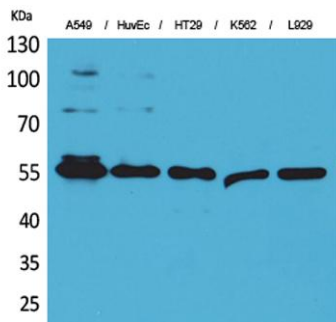




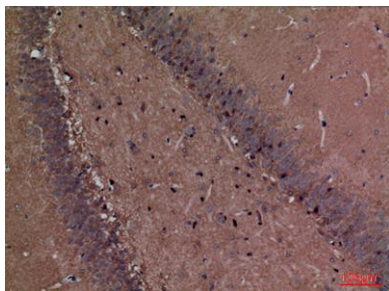
## Background

actin-bundling protein; Singed-like protein; p55  
This gene encodes a member of the fascin family of actin-binding proteins. Fascin proteins organize F-actin into parallel bundles, and are required for the formation of actin-based cellular protrusions. The encoded protein plays a critical role in cell migration, motility, adhesion and cellular interactions. Expression of this gene is known to be regulated by several microRNAs, and overexpression of this gene may play a role in the metastasis of multiple types of cancer by increasing cell motility. Expression of this gene is also a marker for Reed-Sternberg cells in Hodgkin's lymphoma. A pseudogene of this gene is located on the long arm of chromosome 15. [provided by RefSeq, Sep 2011],

Western Blot analysis of A549, HuvEc, HT29, K562, L929 cells using Fascin 1 Polyclonal Antibody. Secondary antibody(catalog#:RS0002) was diluted at 1:20000



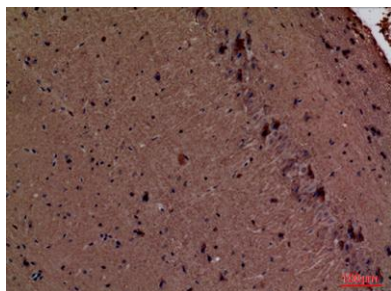
Immunohistochemical analysis of paraffin-embedded rat-brain, antibody was diluted at 1:100



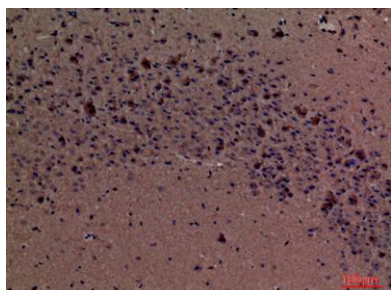


**ELK Biotechnology**

Immunohistochemical analysis of paraffin-embedded mouse-brain, antibody was diluted at 1:100



Immunohistochemical analysis of paraffin-embedded mouse-brain, antibody was diluted at 1:100



+86-27-59760950

[ELKbio@ELKbiotech.com](mailto:ELKbio@ELKbiotech.com)

[www.elkbiotech.com](http://www.elkbiotech.com)

23-2, No.388 Gaoxin 2nd Road, Wuhan East Lake Hi-tech Development Zone, Hubei, P.R.C.