



SP-A rabbit pAb

Cat No.:ES3921

For research use only

Overview

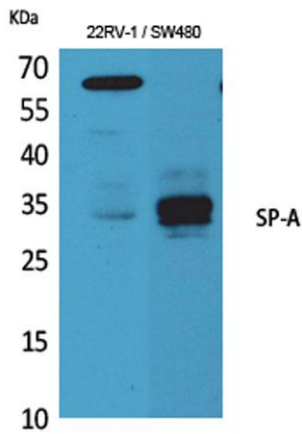
Product Name	SP-A rabbit pAb
Host species	Rabbit
Applications	WB;IHC;IF;ELISA
Species Cross-Reactivity	Human;Mouse;Rat
Recommended dilutions	Western Blot: 1/500 - 1/2000. IHC-p: 1:100-300 ELISA: 1/20000. Not yet tested in other applications.
Immunogen	The antiserum was produced against synthesized peptide derived from the Internal region of human SFTPA1/2. AA range:141-190
Specificity	SP-A Polyclonal Antibody detects endogenous levels of SP-A protein.
Formulation	Liquid in PBS containing 50% glycerol, 0.5% BSA and 0.02% sodium azide.
Storage	Store at -20°C. Avoid repeated freeze-thaw cycles.
Protein Name	Pulmonary surfactant-associated protein A2/Pulmonary surfactant-associated protein A1
Gene Name	SFTPA2/SFTPA1
Cellular localization	Secreted . Secreted, extracellular space, extracellular matrix. Secreted, extracellular space, surface film.
Purification	The antibody was affinity-purified from rabbit antiserum by affinity-chromatography using epitope-specific immunogen.
Clonality	Polyclonal
Concentration	1 mg/ml
Observed band	34kD
Human Gene ID	729238
Human Swiss-Prot Number	Q8IWL1
Alternative Names	SFTPA2; COLEC5; PSAP; SFTP1; SFTPA; SFTPA2B; Pulmonary surfactant-associated protein A2; PSP-A; PSPA; SP-A; SP-A2; 35 kDa pulmonary surfactant-associated protein; Alveolar proteinosis protein; Collectin-5; SFTPA1; COLEC4; PSAP;SFTP1; SFTPA; SFTPA1B; Pulmo



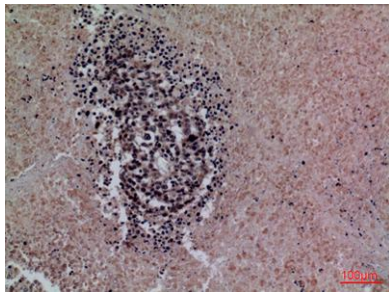


Background

This gene is one of several genes encoding pulmonary-surfactant associated proteins (SFTPA) located on chromosome 10. Mutations in this gene and a highly similar gene located nearby, which affect the highly conserved carbohydrate recognition domain, are associated with idiopathic pulmonary fibrosis. The current version of the assembly displays only a single centromeric SFTPA gene pair rather than the two gene pairs shown in the previous assembly which were thought to have resulted from a duplication. [provided by RefSeq, Sep 2009],



Western Blot analysis of 22RV-1 and SW480 cell lysis, mouse lung cells using SP-A Polyclonal Antibody. Secondary antibody(catalog#:RS0002) was diluted at 1:20000



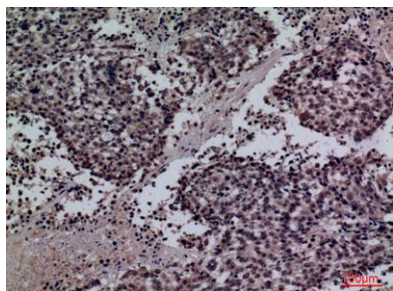
Immunohistochemical analysis of paraffin-embedded human-lung-cancer, antibody was diluted at 1:100



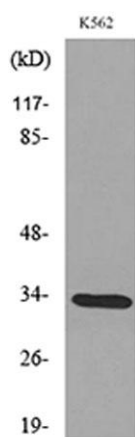


ELK Biotechnology

Immunohistochemical analysis of paraffin-embedded human-lung-cancer, antibody was diluted at 1:100



Western blot analysis of lysate from K562 cells, using SFTPA1/2 Antibody.



+86-27-59760950

ELKbio@ELKbiotech.com

www.elkbiotech.com

23-2, No.388 Gaoxin 2nd Road, Wuhan East Lake Hi-tech Development Zone, Hubei, P.R.C