



CaMKII δ rabbit pAb

Cat No.:ES3793

For research use only

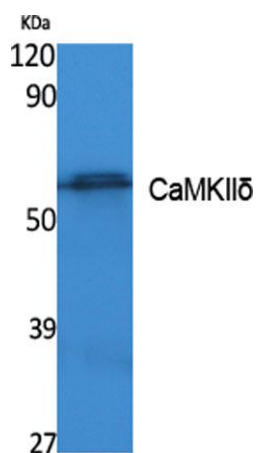
Overview

Product Name	CaMKII δ rabbit pAb
Host species	Rabbit
Applications	WB;IHC;IF;ELISA
Species Cross-Reactivity	Human;Mouse;Rat
Recommended dilutions	Western Blot: 1/500 - 1/2000. IHC-p: 1:100-300 ELISA: 1/40000. Not yet tested in other applications.
Immunogen	Synthesized peptide derived from the Internal region of human CaMKII δ .
Specificity	CaMKII δ Polyclonal Antibody detects endogenous levels of CaMKII δ protein.
Formulation	Liquid in PBS containing 50% glycerol, 0.5% BSA and 0.02% sodium azide.
Storage	Store at -20°C. Avoid repeated freeze-thaw cycles.
Protein Name	Calcium/calmodulin-dependent protein kinase type II subunit delta
Gene Name	CAMK2D
Cellular localization	Cell membrane, sarcolemma ; Peripheral membrane protein ; Cytoplasmic side . Sarcoplasmic reticulum membrane ; Peripheral membrane protein ; Cytoplasmic side .
Purification	The antibody was affinity-purified from rabbit antiserum by affinity-chromatography using epitope-specific immunogen.
Clonality	Polyclonal
Concentration	1 mg/ml
Observed band	56kD
Human Gene ID	817
Human Swiss-Prot Number	Q13557
Alternative Names	CAMK2D; CAMKD; Calcium/calmodulin-dependent protein kinase type II subunit delta; CaM kinase II subunit delta; CaMK-II subunit delta
Background	The product of this gene belongs to the serine/threonine protein kinase family and to the



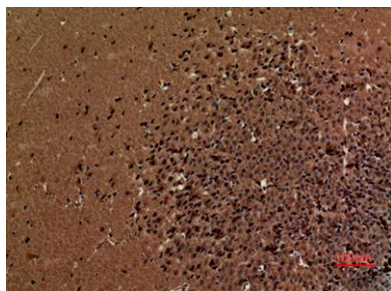


Ca(2+)/calmodulin-dependent protein kinase subfamily. Calcium signaling is crucial for several aspects of plasticity at glutamatergic synapses. In mammalian cells, the enzyme is composed of four different chains: alpha, beta, gamma, and delta. The product of this gene is a delta chain. Alternative splicing results in multiple transcript variants encoding distinct isoforms. Distinct isoforms of this chain have different expression patterns.[provided by RefSeq, Nov 2008],



Western Blot analysis of extracts from K562 cells, using CaMKII δ Polyclonal Antibody. Secondary antibody(catalog#:RS0002) was diluted at 1:20000

Immunohistochemical analysis of paraffin-embedded mouse-brain, antibody was diluted at 1:100





ELK Biotechnology

Immunohistochemical analysis of paraffin-embedded mouse-brain, antibody was diluted at 1:100



+86-27-59760950

ELKbio@ELKbiotech.com

www.elkbiotech.com

23-2, No.388 Gaoxin 2nd Road,Wuhan East Lake Hi-tech Development Zone, Hubei , P.R.C