



ZIP9 rabbit pAb

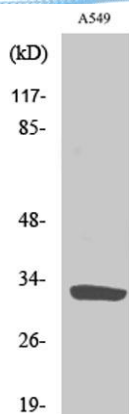
Cat No.:ES3731

For research use only

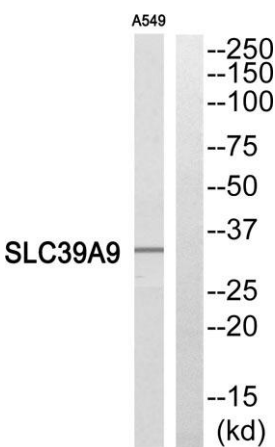
Overview

Product Name	ZIP9 rabbit pAb
Host species	Rabbit
Applications	WB;ELISA
Species Cross-Reactivity	Human;Rat
Recommended dilutions	Western Blot: 1/500 - 1/2000. ELISA: 1/10000. Not yet tested in other applications.
Immunogen	The antiserum was produced against synthesized peptide derived from human SLC39A9. AA range:101-150
Specificity	ZIP9 Polyclonal Antibody detects endogenous levels of ZIP9 protein.
Formulation	Liquid in PBS containing 50% glycerol, 0.5% BSA and 0.02% sodium azide.
Storage	Store at -20°C. Avoid repeated freeze-thaw cycles.
Protein Name	Zinc transporter ZIP9
Gene Name	SLC39A9
Cellular localization	Membrane ; Multi-pass membrane protein .
Purification	The antibody was affinity-purified from rabbit antiserum by affinity-chromatography using epitope-specific immunogen.
Clonality	Polyclonal
Concentration	1 mg/ml
Observed band	33kD
Human Gene ID	55334
Human Swiss-Prot Number	Q9NUM3
Alternative Names	SLC39A9; ZIP9; Zinc transporter ZIP9; Solute carrier family 39 member 9; Zrt- and Irt-like protein 9; ZIP-9
Background	function:May act as a zinc-influx transporter.,similarity:Belongs to the ZIP transporter (TC 2.A.5) family.,

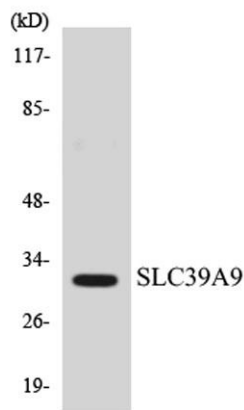




Western Blot analysis of various cells using ZIP9 Polyclonal Antibody. Secondary antibody(catalog#:RS0002) was diluted at 1:20000



Western blot analysis of SLC39A9 Antibody. The lane on the right is blocked with the SLC39A9 peptide.



Western blot analysis of the lysates from HeLa cells using SLC39A9 antibody.

