



ZC3H13 rabbit pAb

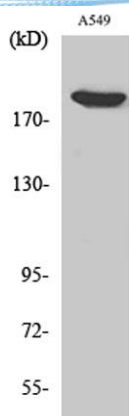
Cat No.:ES3727

For research use only

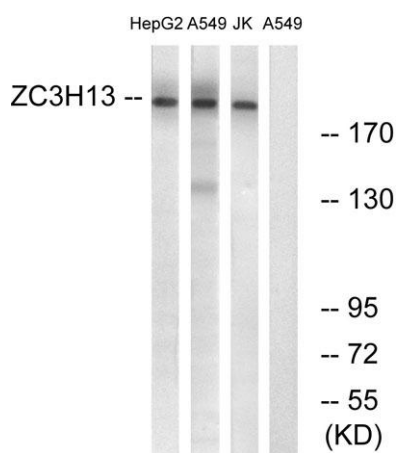
Overview

Product Name	ZC3H13 rabbit pAb
Host species	Rabbit
Applications	WB;ELISA
Species Cross-Reactivity	Human;Mouse
Recommended dilutions	Western Blot: 1/500 - 1/2000. ELISA: 1/10000. Not yet tested in other applications.
Immunogen	The antiserum was produced against synthesized peptide derived from human ZC3H13. AA range:1571-1620
Specificity	ZC3H13 Polyclonal Antibody detects endogenous levels of ZC3H13 protein.
Formulation	Liquid in PBS containing 50% glycerol, 0.5% BSA and 0.02% sodium azide.
Storage	Store at -20°C. Avoid repeated freeze-thaw cycles.
Protein Name	Zinc finger CCCH domain-containing protein 13
Gene Name	ZC3H13
Cellular localization	Nucleus speckle . Nucleus, nucleoplasm .
Purification	The antibody was affinity-purified from rabbit antiserum by affinity-chromatography using epitope-specific immunogen.
Clonality	Polyclonal
Concentration	1 mg/ml
Observed band	200kD
Human Gene ID	23091
Human Swiss-Prot Number	Q5T200
Alternative Names	ZC3H13; KIAA0853; Zinc finger CCCH domain-containing protein 13
Background	PTM:Phosphorylated upon DNA damage, probably by ATM or ATR.,similarity:Contains 1 C3H1-type zinc finger.,

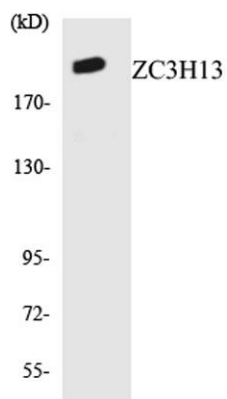




Western Blot analysis of various cells using ZC3H13 Polyclonal Antibody. Secondary antibody(catalog#:RS0002) was diluted at 1:20000



Western blot analysis of lysates from A549, Jurkat, HepG2 cells, using ZC3H13 Antibody. The lane on the right is blocked with the synthesized peptide.



Western blot analysis of the lysates from HUVEC cells using ZC3H13 antibody.

