



# Vasohibin rabbit pAb

Cat No.:ES3685

For research use only

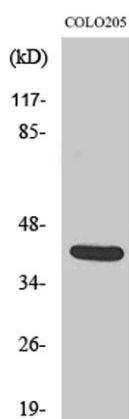
## Overview

Product Name	Vasohibin rabbit pAb
Host species	Rabbit
Applications	WB;ELISA
Species Cross-Reactivity	Human;Mouse;Rat
Recommended dilutions	Western Blot: 1/500 - 1/2000. ELISA: 1/40000. Not yet tested in other applications.
Immunogen	The antiserum was produced against synthesized peptide derived from human VASH1. AA range:261-310
Specificity	Vasohibin Polyclonal Antibody detects endogenous levels of Vasohibin protein.
Formulation	Liquid in PBS containing 50% glycerol, 0.5% BSA and 0.02% sodium azide.
Storage	Store at -20°C. Avoid repeated freeze-thaw cycles.
Protein Name	Vasohibin-1
Gene Name	VASH1
Cellular localization	Cytoplasm . Secreted . Mainly localizes in the cytoplasm (PubMed:27879017). Some fraction is secreted via a non-canonical secretion system; interaction with SVBP promotes secretion (PubMed:27879017)..
Purification	The antibody was affinity-purified from rabbit antiserum by affinity-chromatography using epitope-specific immunogen.
Clonality	Polyclonal
Concentration	1 mg/ml
Observed band	40kD
Human Gene ID	22846
Human Swiss-Prot Number	Q7L8A9
Alternative Names	VASH1; KIAA1036; VASH; Vasohibin-1
Background	caution:Although probably secreted, it lacks a canonical signal sequence.,function:Angiogenesis inhibitor. Inhibits migration, proliferation and





network formation by endothelial cells as well as angiogenesis. This inhibitory effect is selective to endothelial cells as it does not affect the migration of smooth muscle cells or fibroblasts. Does not affect the proliferation of cancer cells in vitro, but inhibits tumor growth and tumor angiogenesis. Acts in an autocrine manner. Inhibits artery neointimal formation and macrophage infiltration. Exhibits heparin-binding activity.,induction:By VEGF.,PTM:2 major forms (42 and 36 kDa) and 2 minors (32 and 27 kDa) may be processed by proteolytic cleavage. The largest form (42 kDa) seems to be secreted and the other major form (63 kDa) seems to accumulate within the cells or pericellular milieu. Polypeptide consisting of Met-77 to Arg-318 may correspond to the 27 kDa form and that consisting of Met-77 to Val-365 may correspond to the 36 kDa form.,similarity:Belongs to the vasohibin family.,tissue specificity:Preferentially expressed in endothelial cells. Highly expressed in fetal organs. Expressed in brain and placenta, and at lower level in heart and kidney. Highly detected in microvessels endothelial cells of atherosclerotic lesions.,

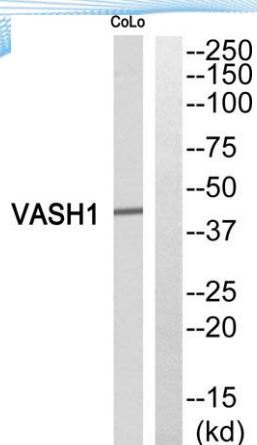


Western Blot analysis of various cells using Vasohibin Polyclonal Antibody. Secondary antibody(catalog#:RS0002) was diluted at 1:20000

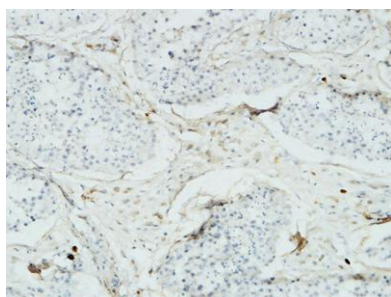




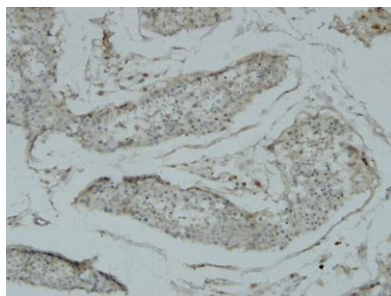
**ELK Biotechnology**



Western blot analysis of VASH1 Antibody. The lane on the right is blocked with the VASH1 peptide.



Immunohistochemical analysis of paraffin-embedded human colon. 1,primary Antibody was diluted at 1:200(4° overnight). 2, EDTA pH 9.0 was used for antigen retrieval. 3 Reday to use Secondary antibody( catalog: RS0011) was used at 37°C, 30min



Immunohistochemical analysis of paraffin-embedded human brain. 1,primary Antibody was diluted at 1:200(4° overnight). 2, EDTA pH 9.0 was used for antigen retrieval 3 Reday to use Secondary antibody( catalog: RS0011) was used at 37°C, 30min



+86-27-59760950

[ELKbio@ELKbiotech.com](mailto:ELKbio@ELKbiotech.com)

[www.elkbiotech.com](http://www.elkbiotech.com)

23-2, No.388 Gaoxin 2nd Road,Wuhan East Lake Hi-tech Development Zone, Hubei , P.R.C