

ULK3 rabbit pAb

Cat No.:ES3674

For research use only

Overview

Product Name	ULK3 rabbit pAb
Host species	Rabbit
Applications	WB;IHC;IF;ELISA
Species Cross-Reactivity	Human;Mouse
Recommended dilutions	Western Blot: 1/500 - 1/2000. Immunohistochemistry: 1/100 - 1/300. ELISA: 1/20000. Not yet tested in other applications.
Immunogen	The antiserum was produced against synthesized peptide derived from human ULK3. AA range:141-190
Specificity	ULK3 Polyclonal Antibody detects endogenous levels of ULK3 protein.
Formulation	Liquid in PBS containing 50% glycerol, 0.5% BSA and 0.02% sodium azide.
Storage	Store at -20°C. Avoid repeated freeze-thaw cycles.
Protein Name	Serine/threonine-protein kinase ULK3
Gene Name	ULK3
Cellular localization	Cytoplasm . Localizes to pre-autophagosomal structure during cellular senescence.
Purification	The antibody was affinity-purified from rabbit antiserum by affinity-chromatography using epitope-specific immunogen.
Clonality	Polyclonal
Concentration	1 mg/ml
Observed band	24kD
Human Gene ID	25989
Human Swiss-Prot Number	Q6PHR2
Alternative Names	ULK3; Serine/threonine-protein kinase ULK3; Unc-51-like kinase 3
Background	catalytic activity:ATP + a protein = ADP + a phosphoprotein.,similarity:Belongs to the protein kinase superfamily. Ser/Thr protein kinase family. APG1/unc-51/ULK1 subfamily.,similarity:Contains 1

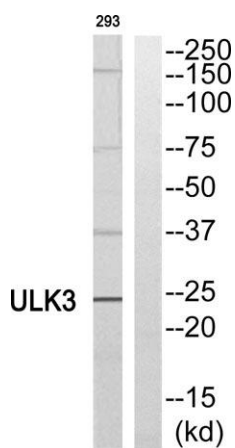




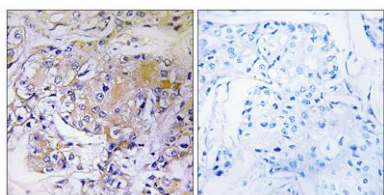
protein kinase domain.,



Western Blot analysis of various cells using ULK3 Polyclonal Antibody diluted at 1:1000. Secondary antibody(catalog#:RS0002) was diluted at 1:20000



Western blot analysis of ULK3 Antibody. The lane on the right is blocked with the ULK3 peptide.



Immunohistochemistry analysis of paraffin-embedded human breast carcinoma, using ULK3 Antibody. The lane on the right is blocked with the ULK3 peptide.

