

UBE3C rabbit pAb

Cat No.:ES3667

For research use only

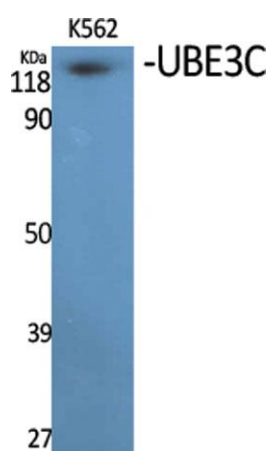
Overview

Product Name	UBE3C rabbit pAb
Host species	Rabbit
Applications	WB;ELISA
Species Cross-Reactivity	Human;Rat;Mouse;
Recommended dilutions	Western Blot: 1/500 - 1/2000. ELISA: 1/10000. Not yet tested in other applications.
Immunogen	Synthesized peptide derived from the Internal region of human UBE3C.
Specificity	UBE3C Polyclonal Antibody detects endogenous levels of UBE3C protein.
Formulation	Liquid in PBS containing 50% glycerol, 0.5% BSA and 0.02% sodium azide.
Storage	Store at -20°C. Avoid repeated freeze-thaw cycles.
Protein Name	Ubiquitin-protein ligase E3C
Gene Name	UBE3C
Cellular localization	proteasome complex,intracellular,nucleus,cytoplasm,
Purification	The antibody was affinity-purified from rabbit antiserum by affinity-chromatography using epitope-specific immunogen.
Clonality	Polyclonal
Concentration	1 mg/ml
Observed band	125kD
Human Gene ID	148581
Human Swiss-Prot Number	Q15386
Alternative Names	UBE3C; KIAA0010; KIAA10; Ubiquitin-protein ligase E3C; HectH2
Background	function:E3 ubiquitin-protein ligase that accepts ubiquitin from the E2 ubiquitin-conjugating enzyme UBE2D1 in the form of a thioester and then directly transfers the ubiquitin to targeted substrates. It can target itself for ubiquitination in vitro and may promote its own degradation in

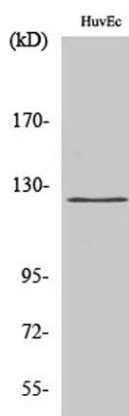




vivo.,miscellaneous:A cysteine residue is required for ubiquitin-thioester formation.,pathway:Protein modification; protein ubiquitination.,similarity:Contains 1 HECT (E6AP-type E3 ubiquitin-protein ligase) domain.,similarity:Contains 1 IQ domain.,subunit:Interacts with 26S proteasomes. Binds CAND2.,tissue specificity:Highly expressed in skeletal muscle. Detected at much lower levels in kidney and pancreas.,



Western Blot analysis of various cells using UBE3C Polyclonal Antibody. Secondary antibody(catalog#:RS0002) was diluted at 1:20000 cells nucleus extracted by Minute TM Cytoplasmic and Nuclear Fractionation kit (SC-003,Inventbiotech,MN,USA).



Western Blot analysis of HuvEc cells using UBE3C Polyclonal Antibody. Secondary antibody(catalog#:RS0002) was diluted at 1:20000 cells nucleus extracted by Minute TM Cytoplasmic and Nuclear Fractionation kit (SC-003,Inventbiotech,MN,USA).

