

TSLC1 rabbit pAb

Cat No.:ES3650

For research use only

Overview

Product Name	TSLC1 rabbit pAb
Host species	Rabbit
Applications	WB;IF;ELISA
Species Cross-Reactivity	Human;Mouse
Recommended dilutions	Western Blot: 1/500 - 1/2000. Immunofluorescence: 1/200 - 1/1000. ELISA: 1/20000. Not yet tested in other applications.
Immunogen	The antiserum was produced against synthesized peptide derived from human CADM1. AA range:393-442
Specificity	TSLC1 Polyclonal Antibody detects endogenous levels of TSLC1 protein.
Formulation	Liquid in PBS containing 50% glycerol, 0.5% BSA and 0.02% sodium azide.
Storage	Store at -20°C. Avoid repeated freeze-thaw cycles.
Protein Name	Cell adhesion molecule 1
Gene Name	CADM1
Cellular localization	Cell membrane ; Single-pass type I membrane protein . Cell junction, synapse . Localized to the basolateral plasma membrane of epithelial cells in gall bladder. .
Purification	The antibody was affinity-purified from rabbit antiserum by affinity-chromatography using epitope-specific immunogen.
Clonality	Polyclonal
Concentration	1 mg/ml
Observed band	49kD
Human Gene ID	23705
Human Swiss-Prot Number	Q9BY67
Alternative Names	CADM1; IGSF4; IGSF4A; NECL2; SYNCAM; TSLC1; Cell adhesion molecule 1; Immunoglobulin superfamily member 4; IgSF4; Nectin-like protein 2; NECL-2; Spermatogenic immunoglobulin superfamily; SgIgSF;





Background

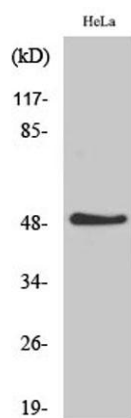
Synaptic cell adhesion molecule; SynCAM; Tumo disease: Absent or down-regulated in many advanced cases of NSCLC as well as in many other human cancers, due to gene silencing by promoter methylation., domain: The cytoplasmic domain appears to play a critical role in proapoptosis and tumor suppressor activity in NSCLC., function: Mediates homophilic cell-cell adhesion in a Ca^{2+} -independent manner. Also mediates heterophilic cell-cell adhesion with CADM3 and PVRL3 in a Ca^{2+} -independent manner. Acts as a tumor suppressor in non-small-cell lung cancer (NSCLC) cells. Interaction with CRTAM promotes natural killer (NK) cell cytotoxicity and interferon-gamma (IFN-gamma) secretion by CD8+ cells in vitro as well as NK cell-mediated rejection of tumors expressing CADM3 in vivo. May contribute to the less invasive phenotypes of lepidic growth tumor cells. In mast cells, may mediate attachment to and promote communication with nerves. CADM1, together with MITE, is essential for development and survival of mast cells in vivo. May act as a synaptic cell adhesion molecule that drives synapse assembly. May be involved in neuronal migration, axon growth, pathfinding, and fasciculation on the axons of differentiating neurons. May play diverse roles in the spermatogenesis including in the adhesion of spermatocytes and spermatids to Sertoli cells and for their normal differentiation into mature spermatozoa., similarity: Belongs to the nectin family., similarity: Contains 1 Ig-like V-type (immunoglobulin-like) domain., similarity: Contains 2 Ig-like C2-type (immunoglobulin-like) domains., subcellular location: Associates with perinuclear and plasma membranes in vivo. Localized to the basolateral plasma membrane of epithelial cells in gall bladder., subunit: Homodimer. Interacts with CRTAM and EPB41L3/DAL1. The interaction with EPB41L3/DAL1 may act to anchor CADM1 to the actin cytoskeleton. Interacts via its C-terminus with the PDZ domain of MPP3 and the



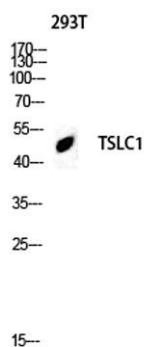


PDZ domain of MPP6.,

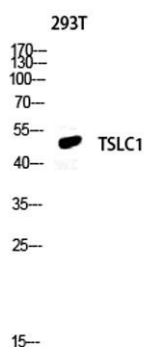
Western Blot analysis of various cells using TSLC1 Polyclonal Antibody diluted at 1:500. Secondary antibody(catalog#:RS0002) was diluted at 1:20000



Western blot analysis of 293T lysis using TSLC1 antibody. Antibody was diluted at 1:500. Secondary antibody(catalog#:RS0002) was diluted at 1:20000

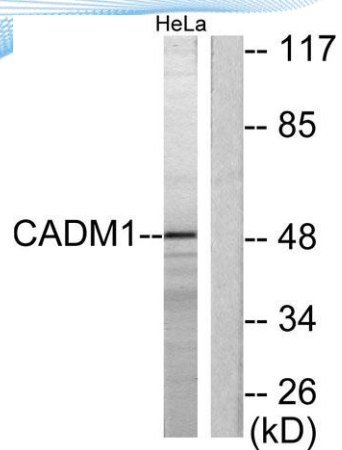


Western blot analysis of 293T lysis using TSLC1 antibody. Antibody was diluted at 1:500. Secondary antibody(catalog#:RS0002) was diluted at 1:20000





ELK Biotechnology



Western blot analysis of lysates from HeLa cells, using CADM1 Antibody. The lane on the right is blocked with the synthesized peptide.



+86-27-59760950

ELKbio@ELKbiotech.com

www.elkbiotech.com

23-2, No.388 Gaoxin 2nd Road,Wuhan East Lake Hi-tech Development Zone, Hubei , P.R.C