

TLK2 rabbit pAb

Cat No.:ES3617

For research use only

Overview

Product Name	TLK2 rabbit pAb
Host species	Rabbit
Applications	WB;ELISA;IHC
Species Cross-Reactivity	Human;Mouse
Recommended dilutions	WB 1:500-2000;IHC-p 1:50-300; ELISA 2000-20000
Immunogen	The antiserum was produced against synthesized peptide derived from human TLK2. AA range:191-240
Specificity	TLK2 Polyclonal Antibody detects endogenous levels of TLK2 protein.
Formulation	Liquid in PBS containing 50% glycerol, 0.5% BSA and 0.02% sodium azide.
Storage	Store at -20°C. Avoid repeated freeze-thaw cycles.
Protein Name	Serine/threonine-protein kinase tousled-like 2
Gene Name	TLK2
Cellular localization	Nucleus. Cytoplasm, perinuclear region. Cytoplasm, cytoskeleton. Colocalizes with the cytoplasmic intermediate filament system during the G1 phase of the cell cycle. Present in the perinuclear region at S phase and in the nucleus at late G2.
Purification	The antibody was affinity-purified from rabbit antiserum by affinity-chromatography using epitope-specific immunogen.
Clonality	Polyclonal
Concentration	1 mg/ml
Observed band	90kD
Human Gene ID	11011
Human Swiss-Prot Number	Q86UE8
Alternative Names	TLK2; Serine/threonine-protein kinase tousled-like 2; HsHPK; PKU-alpha; Tousled-like kinase 2
Background	This gene encodes a nuclear serine/threonine kinase that was first identified in Arabidopsis. The encoded protein is thought to function in the regulation of

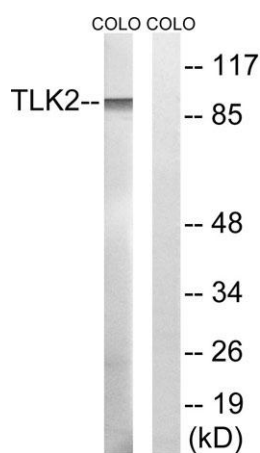




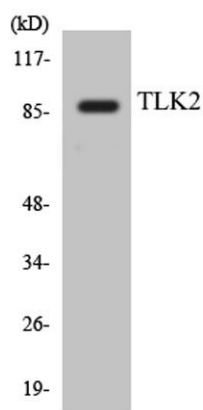
chromatin assembly in the S phase of the cell cycle by regulating the levels of a histone H3/H4 chaperone. This protein is associated with double-strand break repair of DNA damage caused by radiation. Pseudogenes of this gene are present on chromosomes 10 and 17. Alternate splicing results in multiple transcript variants. [provided by RefSeq, Sep 2013],



Western Blot analysis of various cells using TLK2 Polyclonal Antibody. Secondary antibody(catalog#:RS0002) was diluted at 1:20000 cells nucleus extracted by Minute TM Cytoplasmic and Nuclear Fractionation kit (SC-003, Inventbiotech, MN, USA).



Western blot analysis of lysates from COLO cells, using TLK2 Antibody. The lane on the right is blocked with the synthesized peptide.

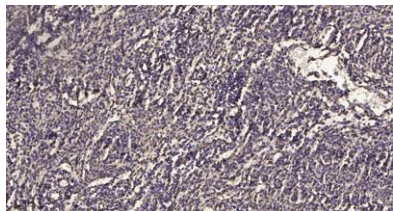


Western blot analysis of the lysates from HeLa cells using TLK2 antibody.





ELK Biotechnology



Immunohistochemical analysis of paraffin-embedded human meningioma. 1, Antibody was diluted at 1:200(4° overnight). 2, Tris-EDTA,pH9.0 was used for antigen retrieval. 3,Secondary antibody was diluted at 1:200(room temperature, 45min).



+86-27-59760950

ELKbio@ELKbiotech.com

www.elkbiotech.com

23-2, No.388 Gaoxin 2nd Road,Wuhan East Lake Hi-tech Development Zone, Hubei , P.R.C