

TAF5L rabbit pAb

Cat No.:ES3554

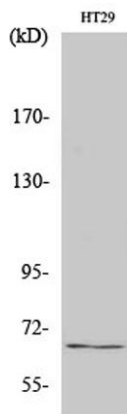
For research use only

Overview

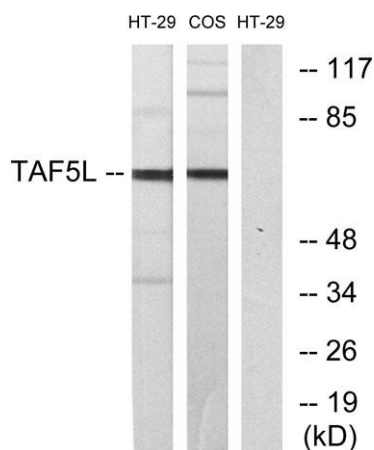
Product Name	TAF5L rabbit pAb
Host species	Rabbit
Applications	WB;IHC;IF;ELISA
Species Cross-Reactivity	Human;Monkey
Recommended dilutions	Western Blot: 1/500 - 1/2000. Immunohistochemistry: 1/100 - 1/300. ELISA: 1/10000. Not yet tested in other applications.
Immunogen	The antiserum was produced against synthesized peptide derived from human TAF5L. AA range:291-340
Specificity	TAF5L Polyclonal Antibody detects endogenous levels of TAF5L protein.
Formulation	Liquid in PBS containing 50% glycerol, 0.5% BSA and 0.02% sodium azide.
Storage	Store at -20°C. Avoid repeated freeze-thaw cycles.
Protein Name	TAF5-like RNA polymerase II p300/CBP-associated factor-associated factor 65 kDa subunit 5L
Gene Name	TAF5L
Cellular localization	Nucleus .
Purification	The antibody was affinity-purified from rabbit antiserum by affinity-chromatography using epitope-specific immunogen.
Clonality	Polyclonal
Concentration	1 mg/ml
Observed band	66kD
Human Gene ID	27097
Human Swiss-Prot Number	O75529
Alternative Names	TAF5L; PAF65B; TAF5-like RNA polymerase II p300/CBP-associated factor-associated factor 65 kDa subunit 5L; PCAF-associated factor 65 beta; PAF65-beta
Background	The product of this gene belongs to the WD-repeat TAF5 family of proteins. This gene encodes a protein



that is a component of the PCAF histone acetylase complex. The PCAF histone acetylase complex, which is composed of more than 20 polypeptides some of which are TAFs, is required for myogenic transcription and differentiation. TAFs may participate in basal transcription, serve as coactivators, function in promoter recognition or modify general transcription factors to facilitate complex assembly and transcription initiation. The encoded protein is structurally similar to one of the histone-like TAFs, TAF5. Alternatively spliced transcript variants encoding different isoforms have been identified for this gene. [provided by RefSeq, Jul 2008],

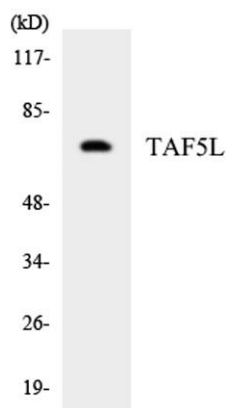


Western Blot analysis of various cells using TAF5L Polyclonal Antibody cells nucleus extracted by Minute TM Cytoplasmic and Nuclear Fractionation kit (SC-003, Inventbiotech, MN, USA).

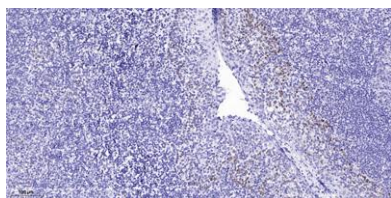


Western blot analysis of lysates from HT-29 and COS7 cells, using TAF5L Antibody. The lane on the right is blocked with the synthesized peptide.





Western blot analysis of the lysates from HepG2 cells using TAF5L antibody.



Immunohistochemical analysis of paraffin-embedded human tonsil. 1, Antibody was diluted at 1:200(4° overnight). 2, Tris-EDTA,pH9.0 was used for antigen retrieval. 3,Secondary antibody was diluted at 1:200(room temperature, 45min).

