

SRE-ZBP rabbit pAb

Cat No.:ES3497

For research use only

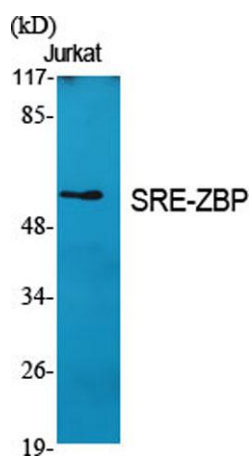
Overview

Product Name	SRE-ZBP rabbit pAb
Host species	Rabbit
Applications	WB;IF;ELISA
Species Cross-Reactivity	Human;Rat;Mouse;
Recommended dilutions	Western Blot: 1/500 - 1/2000. Immunofluorescence: 1/200 - 1/1000. ELISA: 1/5000. Not yet tested in other applications.
Immunogen	The antiserum was produced against synthesized peptide derived from human ZNF187. AA range:51-100
Specificity	SRE-ZBP Polyclonal Antibody detects endogenous levels of SRE-ZBP protein.
Formulation	Liquid in PBS containing 50% glycerol, 0.5% BSA and 0.02% sodium azide.
Storage	Store at -20°C. Avoid repeated freeze-thaw cycles.
Protein Name	Zinc finger protein 187
Gene Name	ZNF187
Cellular localization	Nucleus .
Purification	The antibody was affinity-purified from rabbit antiserum by affinity-chromatography using epitope-specific immunogen.
Clonality	Polyclonal
Concentration	1 mg/ml
Observed band	55kD
Human Gene ID	7741
Human Swiss-Prot Number	Q16670
Alternative Names	ZNF187; ZSCAN26; Zinc finger protein 187; Protein SRE-ZBP; Zinc finger and SCAN domain-containing protein 26
Background	function:May be involved in transcriptional regulation.,induction:By serum stimulation.,similarity:Contains 1 SCAN box domain.,similarity:Contains 8 C2H2-type zinc

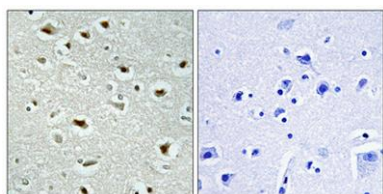




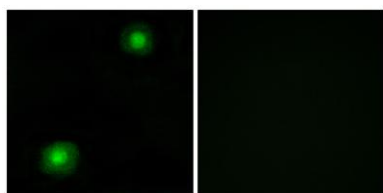
fingers.,



Western Blot analysis of various cells using SRE-ZBP Polyclonal Antibody cells nucleus extracted by Minute TM Cytoplasmic and Nuclear Fractionation kit (SC-003, Inventbiotech, MN, USA).

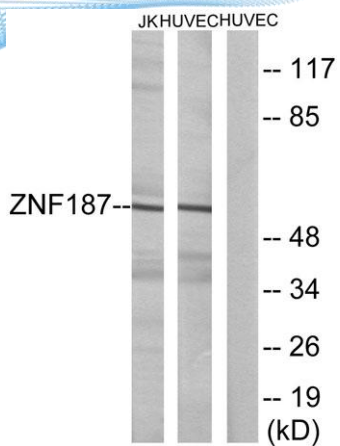


Immunohistochemical analysis of paraffin-embedded Human brain. Antibody was diluted at 1:100 (4° overnight). High-pressure and temperature Tris-EDTA, pH 8.0 was used for antigen retrieval. Negative control (right) obtained from antibody was pre-absorbed by immunogen peptide.



Immunofluorescence analysis of A549 cells, using ZNF187 Antibody. The picture on the right is blocked with the synthesized peptide.





Western blot analysis of lysates from Jurkat and HUVEC cells, using ZNF187 Antibody. The lane on the right is blocked with the synthesized peptide.

