

# SCAF1 rabbit pAb

Cat No.:ES3409

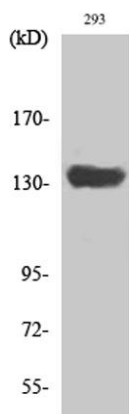
For research use only

## Overview

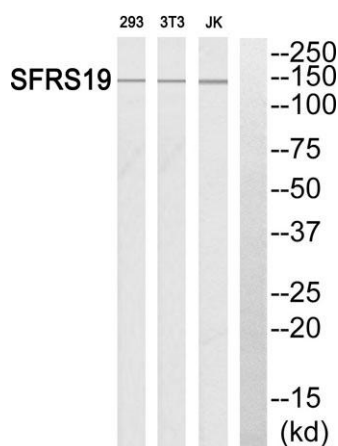
Product Name	SCAF1 rabbit pAb
Host species	Rabbit
Applications	WB;IHC
Species Cross-Reactivity	Human;Mouse
Recommended dilutions	WB 1:500-2000;IHC-p 1:50-300
Immunogen	The antiserum was produced against synthesized peptide derived from human SFRS19. AA range:41-90
Specificity	SCAF1 Polyclonal Antibody detects endogenous levels of SCAF1 protein.
Formulation	Liquid in PBS containing 50% glycerol, 0.5% BSA and 0.02% sodium azide.
Storage	Store at -20°C. Avoid repeated freeze-thaw cycles.
Protein Name	Splicing factor arginine/serine-rich 19
Gene Name	SCAF1
Cellular localization	Nucleus .
Purification	The antibody was affinity-purified from rabbit antiserum by affinity-chromatography using epitope-specific immunogen.
Clonality	Polyclonal
Concentration	1 mg/ml
Observed band	140kD
Human Gene ID	58506
Human Swiss-Prot Number	Q9H7N4
Alternative Names	SCAF1; SFRS19; SRA1; Splicing factor; arginine/serine-rich 19; SR-related and CTD-associated factor 1; SR-related-CTD-associated factor; SCAF; Serine arginine-rich pre-mRNA splicing factor SR-A1; SR-A1
Background	function:May function in pre-mRNA splicing.,induction:Up-regulated by estrogens, androgens and glucocorticoids.,similarity:Belongs to the splicing factor SR family.,subunit:Interacts with



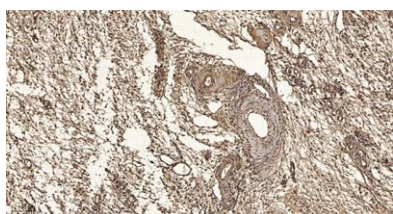
POLR2A.,tissue specificity:Ubiquitous. Highly expressed in fetal brain and liver, poorly expressed in salivary gland, heart, skin and ovary. Expressed in colorectal carcinomas and ovarian cancers. Overexpressed in colorectal carcinomas as compared to normal colonic mucosa.,



Western Blot analysis of various cells using SCAF1 Polyclonal Antibody diluted at 1:2000 cells nucleus extracted by Minute TM Cytoplasmic and Nuclear Fractionation kit (SC-003, Inventbiotech, MN, USA).



Western blot analysis of SFRS19 Antibody. The lane on the right is blocked with the SFRS19 peptide.



Immunohistochemical analysis of paraffin-embedded human oophoroma. 1, Antibody was diluted at 1:200(4° overnight). 2, Tris-EDTA,pH9.0 was used for antigen retrieval. 3,Secondary antibody was diluted at 1:200(room temperature, 45min).

