

# Rab 20 rabbit pAb

Cat No.:ES3287

For research use only

## Overview

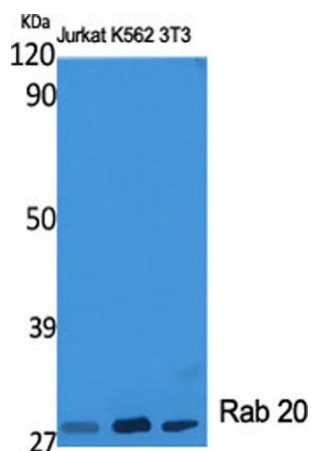
Product Name	Rab 20 rabbit pAb
Host species	Rabbit
Applications	WB;IHC;IF;ELISA
Species Cross-Reactivity	Human;Rat;Mouse;
Recommended dilutions	Western Blot: 1/500 - 1/2000. Immunohistochemistry: 1/100 - 1/300. ELISA: 1/10000. Not yet tested in other applications.
Immunogen	The antiserum was produced against synthesized peptide derived from human RAB20. AA range:115-164
Specificity	Rab 20 Polyclonal Antibody detects endogenous levels of Rab 20 protein.
Formulation	Liquid in PBS containing 50% glycerol, 0.5% BSA and 0.02% sodium azide.
Storage	Store at -20°C. Avoid repeated freeze-thaw cycles.
Protein Name	Ras-related protein Rab-20
Gene Name	RAB20
Cellular localization	Golgi apparatus . Cytoplasmic vesicle, phagosome . Cytoplasmic vesicle, phagosome membrane ; Lipid-anchor ; Cytoplasmic side . Highly enriched on apical endocytic structures in polarized epithelial cells of kidney proximal tubules (By similarity). Recruited to phagosomes containing S.aureus or M.tuberculosis (PubMed:21255211). .
Purification	The antibody was affinity-purified from rabbit antiserum by affinity-chromatography using epitope-specific immunogen.
Clonality	Polyclonal
Concentration	1 mg/ml
Observed band	28kD
Human Gene ID	55647
Human Swiss-Prot Number	Q9NX57
Alternative Names	RAB20; Ras-related protein Rab-20





## Background

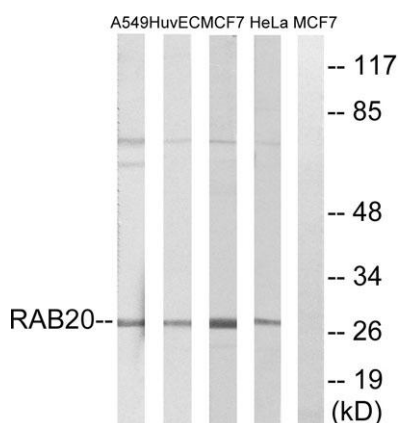
function: Plays a role in apical endocytosis/recycling., similarity: Belongs to the small GTPase superfamily. Rab family., subcellular location: Highly enriched on apical endocytic structures in polarized epithelial cells of kidney proximal tubules., tissue specificity: Low or absent expression in normal pancreas and stronger expression in 15 of 18 exocrine pancreatic adenocarcinomas (at protein level).,



Western Blot analysis of various cells using Rab 20  
Polyclonal Antibody diluted at 1:2000



Western Blot analysis of A549 cells using Rab 20  
Polyclonal Antibody diluted at 1:2000

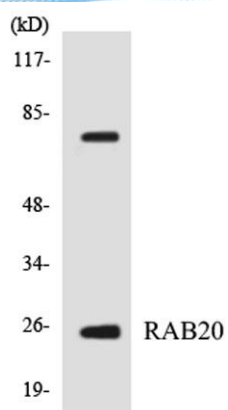


Western blot analysis of lysates from HeLa, MCF-7, HUVEC, and A549 cells, using RAB20 Antibody. The lane on the right is blocked with the synthesized peptide.





**ELK Biotechnology**



Western blot analysis of the lysates from HeLa cells using RAB20 antibody.



+86-27-59760950

[ELKbio@ELKbiotech.com](mailto:ELKbio@ELKbiotech.com)

[www.elkbiotech.com](http://www.elkbiotech.com)

23-2, No.388 Gaoxin 2nd Road, Wuhan East Lake Hi-tech Development Zone, Hubei, P.R.C.