

PUMA rabbit pAb

Cat No.:ES3285

For research use only

Overview

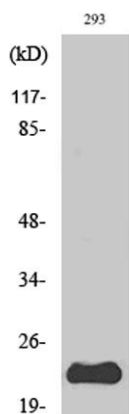
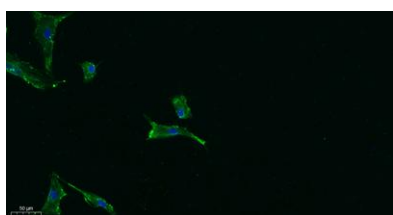
Product Name	PUMA rabbit pAb
Host species	Rabbit
Applications	WB IF;ELISA
Species Cross-Reactivity	Human;Mouse;Rat
Recommended dilutions	WB 1:500-2000 IF 1:100-300 ELISA 1:5000-20000 Not yet tested in other applications.
Immunogen	The antiserum was produced against synthesized peptide derived from human PUMA. AA range:120-169
Specificity	PUMA Polyclonal Antibody detects endogenous levels of PUMA protein.
Formulation	Liquid in PBS containing 50% glycerol, 0.5% BSA and 0.02% sodium azide.
Storage	Store at -20°C. Avoid repeated freeze-thaw cycles.
Protein Name	Bcl-2-binding component 3
Gene Name	BBC3
Cellular localization	Mitochondrion . Localized to the mitochondria in order to induce cytochrome c release.
Purification	The antibody was affinity-purified from rabbit antiserum by affinity-chromatography using epitope-specific immunogen.
Clonality	Polyclonal
Concentration	1 mg/ml
Observed band	23kD
Human Gene ID	27113
Human Swiss-Prot Number	Q9BXH1
Alternative Names	BBC3; PUMA; Bcl-2-binding component 3; JFY-1; p53 up-regulated modulator of apoptosis
Background	This gene encodes a member of the BCL-2 family of proteins. This family member belongs to the BH3-only pro-apoptotic subclass. The protein cooperates with direct activator proteins to induce mitochondrial outer membrane permeabilization





and apoptosis. It can bind to anti-apoptotic Bcl-2 family members to induce mitochondrial dysfunction and caspase activation. Because of its pro-apoptotic role, this gene is a potential drug target for cancer therapy and for tissue injury. Alternative splicing results in multiple transcript variants. [provided by RefSeq, Dec 2011],

Immunofluorescence analysis of A549. 1,primary Antibody was diluted at 1:200(4°C overnight). 2, Goat Anti Rabbit IgG (H&L) - Alexa Fluor 488 Secondary antibody was diluted at 1:1000(room temperature, 50min).3, Picture B: DAPI(blue) 10min.



Western Blot analysis of various cells using PUMA Polyclonal Antibody



Western blot analysis of lysate from 293 cells treated with EGF, using PUMA antibody.

