



PSCA rabbit pAb

Cat No.:ES3268

For research use only

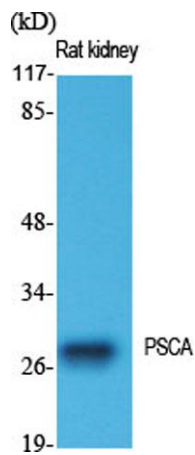
Overview

Product Name	PSCA rabbit pAb
Host species	Rabbit
Applications	WB;ELISA;IHC
Species Cross-Reactivity	Human;Mouse
Recommended dilutions	WB 1:500-2000;IHC-p 1:50-300; ELISA 2000-20000
Immunogen	The antiserum was produced against synthesized peptide derived from human Prostate Stem Cell Antigen. AA range:41-90
Specificity	PSCA Polyclonal Antibody detects endogenous levels of PSCA protein.
Formulation	Liquid in PBS containing 50% glycerol, 0.5% BSA and 0.02% sodium azide.
Storage	Store at -20°C. Avoid repeated freeze-thaw cycles.
Protein Name	Prostate stem cell antigen
Gene Name	PSCA
Cellular localization	Cell membrane ; Lipid-anchor, GPI-anchor .
Purification	The antibody was affinity-purified from rabbit antiserum by affinity-chromatography using epitope-specific immunogen.
Clonality	Polyclonal
Concentration	1 mg/ml
Observed band	29kD
Human Gene ID	8000
Human Swiss-Prot Number	O43653
Alternative Names	PSCA; Prostate stem cell antigen
Background	This gene encodes a glycosylphosphatidylinositol-anchored cell membrane glycoprotein. In addition to being highly expressed in the prostate it is also expressed in the bladder, placenta, colon, kidney, and stomach. This gene is up-regulated in a large proportion of prostate cancers and is also detected in cancers of the bladder and pancreas. This gene includes a





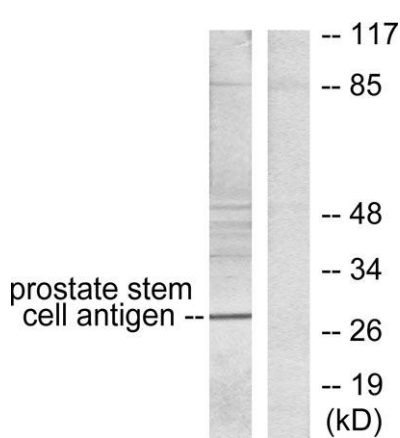
polymorphism that results in an upstream start codon in some individuals; this polymorphism is thought to be associated with a risk for certain gastric and bladder cancers. Alternative splicing results in multiple transcript variants. [provided by RefSeq, Feb 2010],



Western Blot analysis of various cells using PSCA
Polyclonal Antibody diluted at 1:1000



Western Blot analysis of HepG2 cells using PSCA
Polyclonal Antibody diluted at 1:1000



Western blot analysis of lysates from HepG2 cells, using
Prostate Stem Cell Antigen Antibody. The lane on the right
is blocked with the synthesized peptide.





ELK Biotechnology

(kD)
85-

48-

34-

26-

19-



**Prostate Stem
Cell Antigen**

Western blot analysis of the lysates from HeLa cells using
Prostate Stem Cell Antigen antibody.



+86-27-59760950

ELKbio@ELKbiotech.com

www.elkbiotech.com

23-2, No.388 Gaoxin 2nd Road,Wuhan East Lake Hi-tech Development Zone, Hubei , P.R.C