

PIG11 rabbit pAb

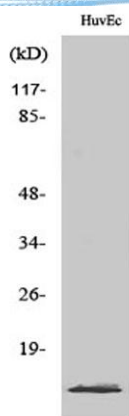
Cat No.:ES3207

For research use only

Overview

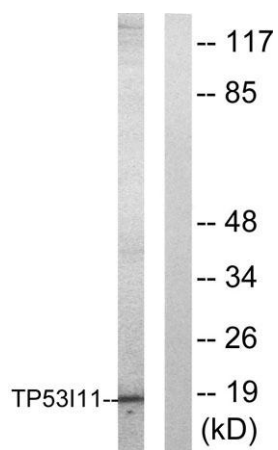
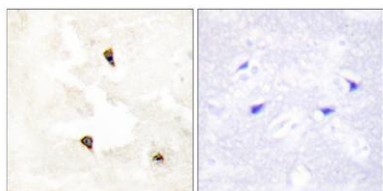
Product Name	PIG11 rabbit pAb
Host species	Rabbit
Applications	WB;IHC;IF;ELISA
Species Cross-Reactivity	Human;Rat;Mouse;
Recommended dilutions	Western Blot: 1/500 - 1/2000. Immunohistochemistry: 1/100 - 1/300. Immunofluorescence: 1/200 - 1/1000. ELISA: 1/20000. Not yet tested in other applications.
Immunogen	The antiserum was produced against synthesized peptide derived from human TP53I11. AA range:71-120
Specificity	PIG11 Polyclonal Antibody detects endogenous levels of PIG11 protein.
Formulation	Liquid in PBS containing 50% glycerol, 0.5% BSA and 0.02% sodium azide.
Storage	Store at -20°C. Avoid repeated freeze-thaw cycles.
Protein Name	Tumor protein p53-inducible protein 11
Gene Name	TP53I11
Cellular localization	Membrane ; Multi-pass membrane protein .
Purification	The antibody was affinity-purified from rabbit antiserum by affinity-chromatography using epitope-specific immunogen.
Clonality	Polyclonal
Concentration	1 mg/ml
Observed band	18kD
Human Gene ID	9537
Human Swiss-Prot Number	O14683
Alternative Names	TP53I11; PIG11; Tumor protein p53-inducible protein 11; p53-induced gene 11 protein
Background	TP53I11 (Tumor Protein P53 Inducible Protein 11) is a Protein Coding gene.





Western Blot analysis of various cells using PIG11 Polyclonal Antibody

Immunohistochemistry analysis of paraffin-embedded human breast carcinoma tissue, using TP53I11 Antibody. The picture on the right is blocked with the synthesized peptide.



Western blot analysis of lysates from HUVEC cells, using TP53I11 Antibody. The lane on the right is blocked with the synthesized peptide.

