

PGRMC2 rabbit pAb

Cat No.:ES3190

For research use only

Overview

Product Name	PGRMC2 rabbit pAb
Host species	Rabbit
Applications	WB;ELISA;IHC
Species Cross-Reactivity	Human;Mouse;Rat
Recommended dilutions	WB 1:500-2000;IHC-p 1:50-300; ELISA 2000-20000
Immunogen	The antiserum was produced against synthesized peptide derived from human PGRMC2. AA range:174-223
Specificity	PGRMC2 Polyclonal Antibody detects endogenous levels of PGRMC2 protein.
Formulation	Liquid in PBS containing 50% glycerol, 0.5% BSA and 0.02% sodium azide.
Storage	Store at -20°C. Avoid repeated freeze-thaw cycles.
Protein Name	Membrane-associated progesterone receptor component 2
Gene Name	PGRMC2
Cellular localization	Membrane ; Single-pass membrane protein . Nucleus envelope . Endoplasmic reticulum .
Purification	The antibody was affinity-purified from rabbit antiserum by affinity-chromatography using epitope-specific immunogen.
Clonality	Polyclonal
Concentration	1 mg/ml
Observed band	25kD
Human Gene ID	10424
Human Swiss-Prot Number	O15173
Alternative Names	PGRMC2; DG6; PMBP; Membrane-associated progesterone receptor component 2; Progesterone membrane-binding protein; Steroid receptor protein DG6
Background	domain:The cytochrome b5 heme-binding domain lacks the conserved iron-binding His residues at positions 137 and 161.,function:Receptor for

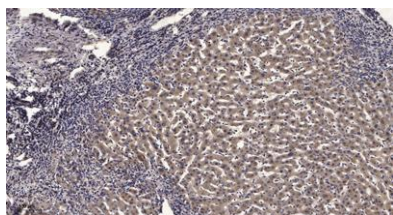




steroids .,similarity:Belongs to the cytochrome b5 family. MAPR subfamily.,similarity:Contains 1 cytochrome b5 heme-binding domain.,



Western Blot analysis of various cells using PGRMC2 Polyclonal Antibody diluted at 1:1000



Immunohistochemical analysis of paraffin-embedded human liver cancer. 1, Antibody was diluted at 1:200(4° overnight). 2, Tris-EDTA,pH9.0 was used for antigen retrieval. 3,Secondary antibody was diluted at 1:200(room temperature, 45min).

