



PDRG1 rabbit pAb

Cat No.:ES3171

For research use only

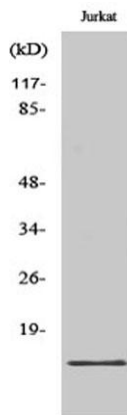
Overview

Product Name	PDRG1 rabbit pAb
Host species	Rabbit
Applications	WB;IHC;IF;ELISA
Species Cross-Reactivity	Human;Mouse;Rat
Recommended dilutions	Western Blot: 1/500 - 1/2000. Immunohistochemistry: 1/100 - 1/300. ELISA: 1/40000. Not yet tested in other applications.
Immunogen	The antiserum was produced against synthesized peptide derived from human PDRG1. AA range:58-107
Specificity	PDRG1 Polyclonal Antibody detects endogenous levels of PDRG1 protein.
Formulation	Liquid in PBS containing 50% glycerol, 0.5% BSA and 0.02% sodium azide.
Storage	Store at -20°C. Avoid repeated freeze-thaw cycles.
Protein Name	p53 and DNA damage-regulated protein 1
Gene Name	PDRG1
Cellular localization	Cytoplasm .
Purification	The antibody was affinity-purified from rabbit antiserum by affinity-chromatography using epitope-specific immunogen.
Clonality	Polyclonal
Concentration	1 mg/ml
Observed band	19kD
Human Gene ID	81572
Human Swiss-Prot Number	Q9NUG6
Alternative Names	PDRG1; C20orf126; PDRG; p53 and DNA damage-regulated protein 1
Background	function:May play a role in chaperone-mediated protein folding .,induction:By UV and repressed by TP53/p53.,similarity:Belongs to the prefoldin subunit beta family.,tissue specificity:Predominantly expressed in normal testis and exhibits reduced but

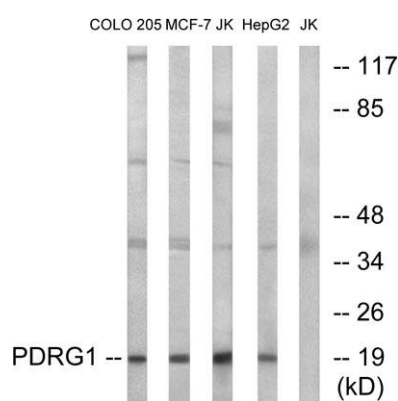
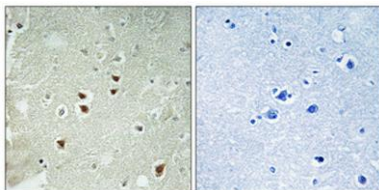


detectable expression in other organs.,

Western Blot analysis of various cells using PDRG1 Polyclonal Antibody



Immunohistochemical analysis of paraffin-embedded Human brain. Antibody was diluted at 1:100(4° overnight). High-pressure and temperature Tris-EDTA,pH8.0 was used for antigen retrieval. Negative contrl (right) obtained from antibody was pre-absorbed by i



Western blot analysis of lysates from Jurkat, COLO, MCF-7, and HepG2 cells, using PDRG1 Antibody. The lane on the right is blocked with the synthesized peptide.

