

PDK1 rabbit pAb

Cat No.:ES3168

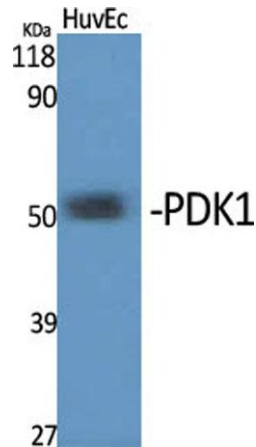
For research use only

Overview

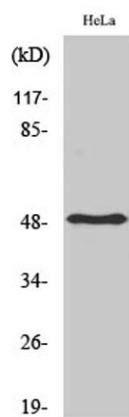
Product Name	PDK1 rabbit pAb
Host species	Rabbit
Applications	WB;IHC
Species Cross-Reactivity	Human;Mouse;Rat
Recommended dilutions	WB 1:500-2000;IHC-p 1:50-300
Immunogen	Synthesized peptide derived from PDK1 . at AA range: 80-160
Specificity	PDK1 Polyclonal Antibody detects endogenous levels of PDK1 protein.
Formulation	Liquid in PBS containing 50% glycerol, 0.5% BSA and 0.02% sodium azide.
Storage	Store at -20°C. Avoid repeated freeze-thaw cycles.
Protein Name	[Pyruvate dehydrogenase [lipoamide]] kinase isozyme 1 mitochondrial
Gene Name	PDK1
Cellular localization	Mitochondrion matrix .
Purification	The antibody was affinity-purified from rabbit antiserum by affinity-chromatography using epitope-specific immunogen.
Clonality	Polyclonal
Concentration	1 mg/ml
Observed band	50kD
Human Gene ID	5163
Human Swiss-Prot Number	Q15118
Alternative Names	PDK1; PDHK1; [Pyruvate dehydrogenase [lipoamide]] kinase isozyme 1; mitochondrial; Pyruvate dehydrogenase kinase isoform 1
Background	Pyruvate dehydrogenase (PDH) is a mitochondrial multienzyme complex that catalyzes the oxidative decarboxylation of pyruvate and is one of the major enzymes responsible for the regulation of homeostasis of carbohydrate fuels in mammals. The enzymatic activity is regulated by a



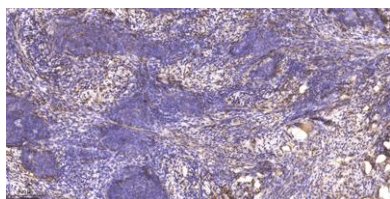
phosphorylation/dephosphorylation cycle.
Phosphorylation of PDH by a specific pyruvate dehydrogenase kinase (PDK) results in inactivation. Multiple alternatively spliced transcript variants have been found for this gene. [provided by RefSeq, Jun 2013],



Western Blot analysis of various cells using PDK1 Polyclonal Antibody



Western Blot analysis of HeLa cells using PDK1 Polyclonal Antibody



Immunohistochemical analysis of paraffin-embedded human cervical carcinoma. 1, Antibody was diluted at 1:200(4° overnight). 2, Tris-EDTA,pH9.0 was used for antigen retrieval. 3,Secondary antibody was diluted at 1:200(room temperature, 45min).

