



# IL-20R $\beta$ rabbit pAb

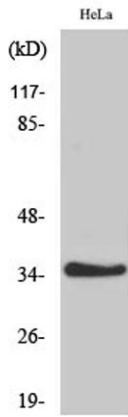
Cat No.:ES2613

For research use only

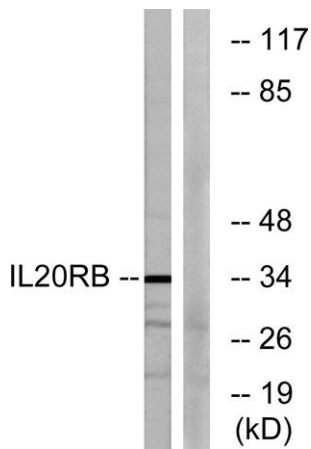
## Overview

<b>Product Name</b>	IL-20R $\beta$ rabbit pAb
<b>Host species</b>	Rabbit
<b>Applications</b>	WB;IHC;IF;ELISA
<b>Species Cross-Reactivity</b>	Human;Mouse
<b>Recommended dilutions</b>	Western Blot: 1/500 - 1/2000. Immunohistochemistry: 1/100 - 1/300. ELISA: 1/20000. Not yet tested in other applications.
<b>Immunogen</b>	The antiserum was produced against synthesized peptide derived from human IL20RB. AA range:141-190
<b>Specificity</b>	IL-20R $\beta$ Polyclonal Antibody detects endogenous levels of IL-20R $\beta$ protein.
<b>Formulation</b>	Liquid in PBS containing 50% glycerol, 0.5% BSA and 0.02% sodium azide.
<b>Storage</b>	Store at -20°C. Avoid repeated freeze-thaw cycles.
<b>Protein Name</b>	Interleukin-20 receptor subunit beta
<b>Gene Name</b>	IL20RB
<b>Cellular localization</b>	Membrane ; Single-pass type I membrane protein .
<b>Purification</b>	The antibody was affinity-purified from rabbit antiserum by affinity-chromatography using epitope-specific immunogen.
<b>Clonality</b>	Polyclonal
<b>Concentration</b>	1 mg/ml
<b>Observed band</b>	35kD
<b>Human Gene ID</b>	53833
<b>Human Swiss-Prot Number</b>	Q6UXL0
<b>Alternative Names</b>	IL20RB; DIRS1; Interleukin-20 receptor subunit beta; IL-20 receptor subunit beta; IL-20R-beta; IL-20RB; IL-20R2
<b>Background</b>	IL20RB and IL20RA (MIM 605620) form a heterodimeric receptor for interleukin-20 (IL20; MIM 605619) (Blumberg et al., 2001 [PubMed 11163236]).[supplied by OMIM, Feb 2009],

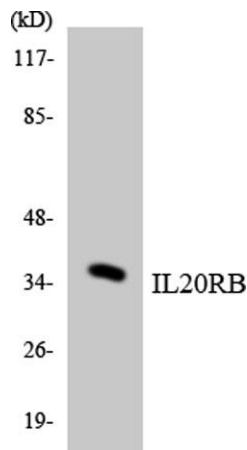




Western Blot analysis of various cells using IL-20R $\beta$  Polyclonal Antibody



Western blot analysis of lysates from HeLa cells, using IL20RB Antibody. The lane on the right is blocked with the synthesized peptide.



Western blot analysis of the lysates from COLO205 cells using IL20RB antibody.

