



GPR50 rabbit pAb

Cat No.:ES2464

For research use only

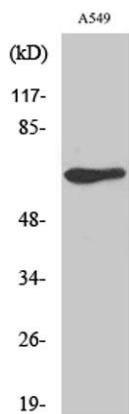
Overview

Product Name	GPR50 rabbit pAb
Host species	Rabbit
Applications	WB;IF;ELISA
Species Cross-Reactivity	Human;Rat;Mouse;
Recommended dilutions	Western Blot: 1/500 - 1/2000. Immunofluorescence: 1/200 - 1/1000. ELISA: 1/10000. Not yet tested in other applications.
Immunogen	The antiserum was produced against synthesized peptide derived from human MTR1L. AA range:301-350
Specificity	GPR50 Polyclonal Antibody detects endogenous levels of GPR50 protein.
Formulation	Liquid in PBS containing 50% glycerol, 0.5% BSA and 0.02% sodium azide.
Storage	Store at -20°C. Avoid repeated freeze-thaw cycles.
Protein Name	Melatonin-related receptor
Gene Name	GPR50
Cellular localization	Cell membrane; Multi-pass membrane protein.
Purification	The antibody was affinity-purified from rabbit antiserum by affinity-chromatography using epitope-specific immunogen.
Clonality	Polyclonal
Concentration	1 mg/ml
Observed band	68kD
Human Gene ID	9248
Human Swiss-Prot Number	Q13585
Alternative Names	GPR50; Melatonin-related receptor; G protein-coupled receptor 50; H9
Background	This gene product belongs to the G-protein coupled receptor 1 family. Even though this protein shares similarity with the melatonin receptors, it does not bind melatonin, however, it inhibits melatonin receptor 1A function through heterodimerization.





Polymorphic variants of this gene have been associated with bipolar affective disorder in women. [provided by RefSeq, Jan 2010],



Western Blot analysis of various cells using GPR50 Polyclonal Antibody diluted at 1:1000

Immunofluorescence analysis of LOVO cells, using MTR1L Antibody. The picture on the right is blocked with the synthesized peptide.

