



CaV α 2 δ 1 rabbit pAb

Cat No.:ES20793

For research use only

Overview

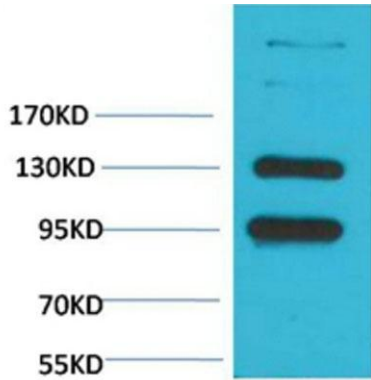
Product Name	CaV α 2 δ 1 rabbit pAb
Host species	Rabbit
Applications	WB;IHC;IF
Species Cross-Reactivity	Rat
Recommended dilutions	Western Blot: 1/500 - 1/2000. Immunohistochemistry: 1/100 - 1/300. ELISA: 1/40000. Not yet tested in other applications.
Immunogen	Synthetic Peptide of CaV α 2 δ 1
Specificity	The antibody detects endogenous CaV α 2 δ 1 protein
Formulation	Liquid in PBS containing 50% glycerol, 0.5% BSA and 0.02% sodium azide.
Storage	Store at -20°C. Avoid repeated freeze-thaw cycles.
Protein Name	Voltage-dependent calcium channel subunit alpha-2/delta-1 (Voltage-gated calcium channel subunit alpha-2/delta-1) [Cleaved into: Voltage-dependent calcium channel subunit alpha-2-1; Voltage-dependent
Gene Name	CACNA2D1
Cellular localization	Membrane ; Single-pass type I membrane protein .
Purification	The antibody was affinity-purified from rabbit antiserum by affinity-chromatography using epitope-specific immunogen.
Clonality	Polyclonal
Concentration	1 mg/ml
Observed band	100-130kD
Human Gene ID	781
Human Swiss-Prot Number	P54289
Alternative Names	Voltage-dependent calcium channel subunit alpha-2/delta-1 (Voltage-gated calcium channel subunit alpha-2/delta-1) [Cleaved into: Voltage-dependent calcium channel subunit alpha-2-1; Voltage-dependent calcium channel subunit delta-1]



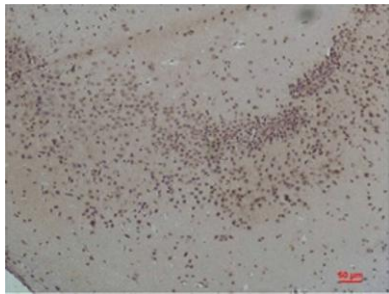


Background

calcium voltage-gated channel auxiliary subunit alpha2delta 1(CACNA2D1) Homo sapiens The preproprotein encoded by this gene is cleaved into multiple chains that comprise the alpha-2 and delta subunits of the voltage-dependent calcium channel complex. Calcium channels mediate the influx of calcium ions into the cell upon membrane polarization. Mutations in this gene can cause cardiac deficiencies, including Brugada syndrome and short QT syndrome. Alternate splicing results in multiple transcript variants, some of which may lack the delta subunit portion. [provided by RefSeq, Nov 2014],



Western blot analysis of Rat Brain Tissue with CaV α 2 δ 1 Rabbit pAb diluted at 1:2,000.



Immunohistochemical analysis of paraffin-embedded Rat Brain Tissue using CaV α 2 δ 1 Rabbit pAb diluted at 1:200.

