



# Kv11.3 rabbit pAb

Cat No.:ES20682

For research use only

## Overview

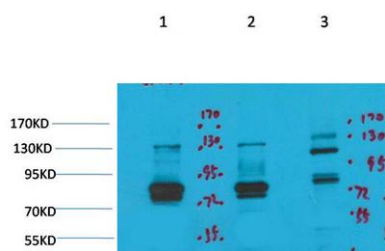
<b>Product Name</b>	Kv11.3 rabbit pAb
<b>Host species</b>	Rabbit
<b>Applications</b>	WB;IHC;IF
<b>Species Cross-Reactivity</b>	Human;Rat;Mouse
<b>Recommended dilutions</b>	WB 1:1000-2000, IHC 1:100-200
<b>Immunogen</b>	Synthetic Peptide of Kv11.3. AA range 1130-1180
<b>Specificity</b>	Kv11.3 protein(A263) detects endogenous levels of Kv11.3
<b>Formulation</b>	Liquid in PBS containing 50% glycerol, 0.5% BSA and 0.02% sodium azide.
<b>Storage</b>	Store at -20°C. Avoid repeated freeze-thaw cycles.
<b>Protein Name</b>	Potassium voltage-gated channel subfamily H member 7 (Ether-a-go-go-related gene potassium channel 3) (ERG-3) (Eag-related protein 3) (Ether-a-go-go-related protein 3) (hERG-3) (Voltage-gated potassiu
<b>Gene Name</b>	KCNH7
<b>Cellular localization</b>	Membrane; Multi-pass membrane protein.
<b>Purification</b>	The antibody was affinity-purified from rabbit antiserum by affinity-chromatography using epitope-specific immunogen.
<b>Clonality</b>	Polyclonal
<b>Concentration</b>	1 mg/ml
<b>Observed band</b>	83135kD
<b>Human Gene ID</b>	90134
<b>Human Swiss-Prot Number</b>	Q9NS40
<b>Alternative Names</b>	Potassium voltage-gated channel subfamily H member 7 (Ether-a-go-go-related gene potassium channel 3;ERG-3;Eag-related protein 3;Ether-a-go-go-related protein 3;hERG-3;Voltage-gated potassium channel subunit Kv11.3)
<b>Background</b>	Voltage-gated potassium (Kv) channels represent the



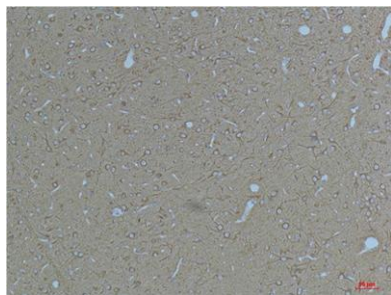


most complex class of voltage-gated ion channels from both functional and structural standpoints. Their diverse functions include regulating neurotransmitter release, heart rate, insulin secretion, neuronal excitability, epithelial electrolyte transport, smooth muscle contraction, and cell volume. This gene encodes a member of the potassium channel, voltage-gated, subfamily H. This member is a pore-forming (alpha) subunit. There are at least two alternatively spliced transcript variants derived from this gene and encoding distinct isoforms. [provided by RefSeq, Jul 2008],

Western blot analysis of 1) Rat Brain Tissue, 2) Mouse Brain Tissue, 3) HeLa with KV11.3 Rabbit pAb diluted at 1:2,000.



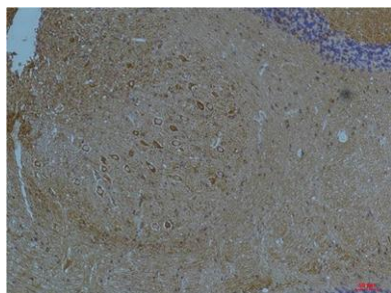
Immunohistochemical analysis of paraffin-embedded Rat Brain Tissue using Kv11.3 Rabbit pAb diluted at 1:200.





**ELK Biotechnology**

Immunohistochemical analysis of paraffin-embedded  
Mouse BrainTissue using Kv11.3 Rabbit pAb diluted at  
1:200.



+86-27-59760950

[ELKbio@ELKbiotech.com](mailto:ELKbio@ELKbiotech.com)

[www.elkbiotech.com](http://www.elkbiotech.com)

23-2, No.388 Gaoxin 2nd Road,Wuhan East Lake Hi-tech Development Zone, Hubei , P.R.C