



LexA DNA Binding Region rabbit pAb

Cat No.:ES20677

For research use only

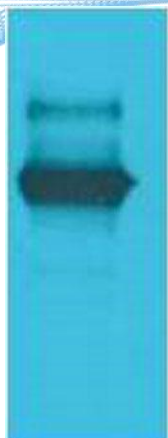
Overview

Product Name	LexA DNA Binding Region rabbit pAb
Host species	Rabbit
Applications	WB
Species Cross-Reactivity	
Recommended dilutions	WB: 1:10000-50000
Immunogen	Recombinant Protein of LexA DNA Binding Region
Specificity	The antibody detects endogenous LexA DNA Binding Region protein.
Formulation	Liquid in PBS containing 50% glycerol, 0.5% BSA and 0.02% sodium azide.
Storage	Store at -20°C. Avoid repeated freeze-thaw cycles.
Protein Name	
Gene Name	
Cellular localization	
Purification	The antibody was affinity-purified from rabbit antiserum by affinity-chromatography using epitope-specific immunogen.
Clonality	Polyclonal
Concentration	
Observed band	
Human Gene ID	
Human Swiss-Prot Number	
Alternative Names	YM3412
Background	LexA (EC 3. 1. 8) is a DNA binding protein, is associated with SOS response of cyanobacteria as well as other regulatory networks. Has been shown to directly regulate genes involved in carbon assimilation or controlled by carbon availability. In Synechocystis PCC 6803 LexA is not localised to the thylakoid membranes but to the inner region of the cytoplasm.





ELK Biotechnology



Western blot analysis of Recombinant LexA protein using LexA DNA Binding Region Polyclonal Antibody. Secondary antibody(catalog#:RS0002) was diluted at 1:20000



+86-27-59760950

ELKbio@ELKbiotech.com

www.elkbiotech.com

23-2, No.388 Gaoxin 2nd Road,Wuhan East Lake Hi-tech Development Zone, Hubei , P.R.C