



# L-type Ca<sup>++</sup> CP $\gamma$ 5 rabbit pAb

Cat No.:ES20675

For research use only

## Overview

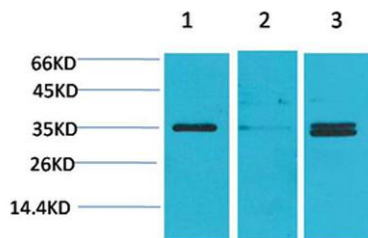
<b>Product Name</b>	L-type Ca <sup>++</sup> CP $\gamma$ 5 rabbit pAb
<b>Host species</b>	Rabbit
<b>Applications</b>	WB;IHC;IF
<b>Species Cross-Reactivity</b>	Human;Mouse;Rat
<b>Recommended dilutions</b>	WB: 1:500-1000 IHC: 1:100-200
<b>Immunogen</b>	Synthetic Peptide of L-type Ca <sup>++</sup> CP $\gamma$ 5 AA range: 110-190
<b>Specificity</b>	The antibody detects endogenous L-type Ca <sup>++</sup> CP $\gamma$ 5 protein.
<b>Formulation</b>	Liquid in PBS containing 50% glycerol, 0.5% BSA and 0.02% sodium azide.
<b>Storage</b>	Store at -20°C. Avoid repeated freeze-thaw cycles.
<b>Protein Name</b>	Voltage-dependent calcium channel gamma-5 subunit
<b>Gene Name</b>	CACNG5
<b>Cellular localization</b>	Membrane ; Multi-pass membrane protein . Cell junction, synapse, postsynaptic density membrane .
<b>Purification</b>	The antibody was affinity-purified from rabbit antiserum by affinity-chromatography using epitope-specific immunogen.
<b>Clonality</b>	Polyclonal
<b>Concentration</b>	
<b>Observed band</b>	35kD
<b>Human Gene ID</b>	10369
<b>Human Swiss-Prot Number</b>	Q9UF02
<b>Alternative Names</b>	CACNG5; Voltage-dependent calcium channel gamma-5 subunit; Neuronal voltage-gated calcium channel gamma-5 subunit; Transmembrane AMPAR regulatory protein gamma-5; TARP gamma-5 calcium voltage-gated channel auxiliary subunit gamma 5(CACNG5) Homo sapiens The protein encoded by this gene is a type II transmembrane AMPA receptor regulatory protein (TARP). TARPs
<b>Background</b>	





regulate both trafficking and channel gating of the AMPA receptors. This gene is part of a functionally diverse eight-member protein subfamily of the PMP-22/EMP/MP20 family and is located in a cluster with two family members, a type I TARP and a calcium channel gamma subunit. This gene is a susceptibility locus for schizophrenia and bipolar disorder. [provided by RefSeq, Dec 2010],

Western blot analysis of 1) Human Brain Tissue, 2) Mouse Brain Tissue, 3) Rat Brain Tissue using L-type Ca<sup>++</sup> CP  $\gamma$ 5 Polyclonal Antibody. Secondary antibody(catalog#:RS0002) was diluted at 1:20000



Immunohistochemical analysis of paraffin-embedded Rat Brain Tissue using L-type Ca<sup>++</sup> CP  $\gamma$ 5 Polyclonal Antibody.

